



## Casing Guide

### Attachment to type 400 cables



#### NOTICE!

Installer: These instructions contain important safety information and must be forwarded to the boat owner.

The ends of the core wire in this control have been annealed and must be installed strictly in accordance with the following Instructions.

To secure the control wire in the casing guide, the control wire is held securely in place by two screws, the clamp screw and the anchor screw—but the wire must be kinked to ensure positive location. This is easily done by first turning the clamp screw until it just touches the wire. Next advance the clamp screw one turn only. This will kink the wire sufficiently to locate it in the casing guide. Finally, install the anchor screw and tighten securely. See figure 1.



#### CAUTION!

It is possible to completely shear off the wire, so be careful to advance the clamp screw to the point of contact only and then make just one complete turn to kink the wire without shearing it.

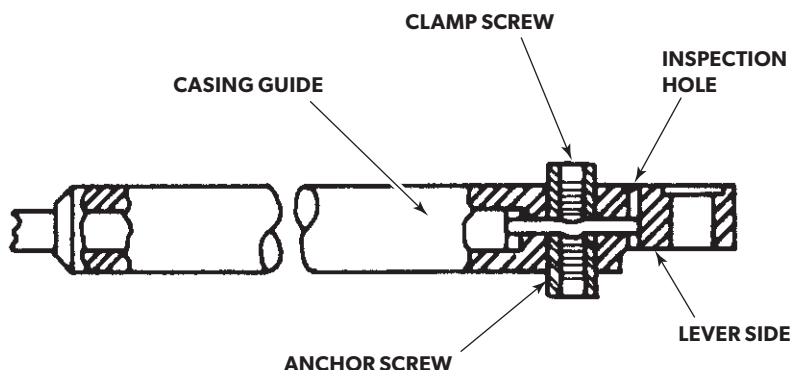


Figure 1. Casing guide (motor end, control end similar).



#### WARNING!

When assembling the casing guides, secure anchoring of the control wires is extremely important. The wires must be properly secured or they may come loose during operation of the engine. Following the procedure outlined above will ensure a safe installation.