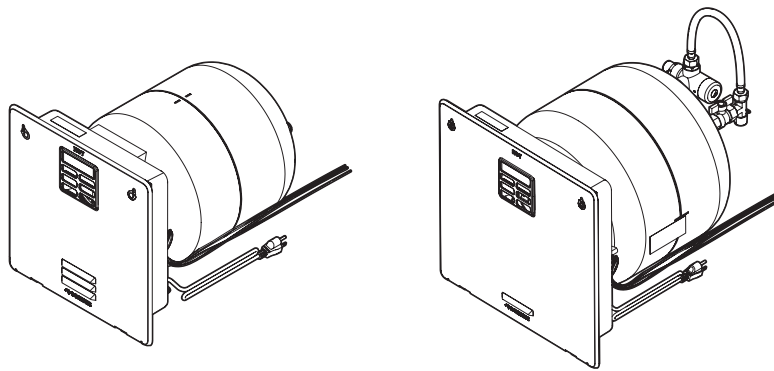


# ↗ DOMETIC

# HEATING

# WATER HEATERS



WH-6GA, WH-6GEA, WH-9GEA, WH-10GEA, WH-16GEA

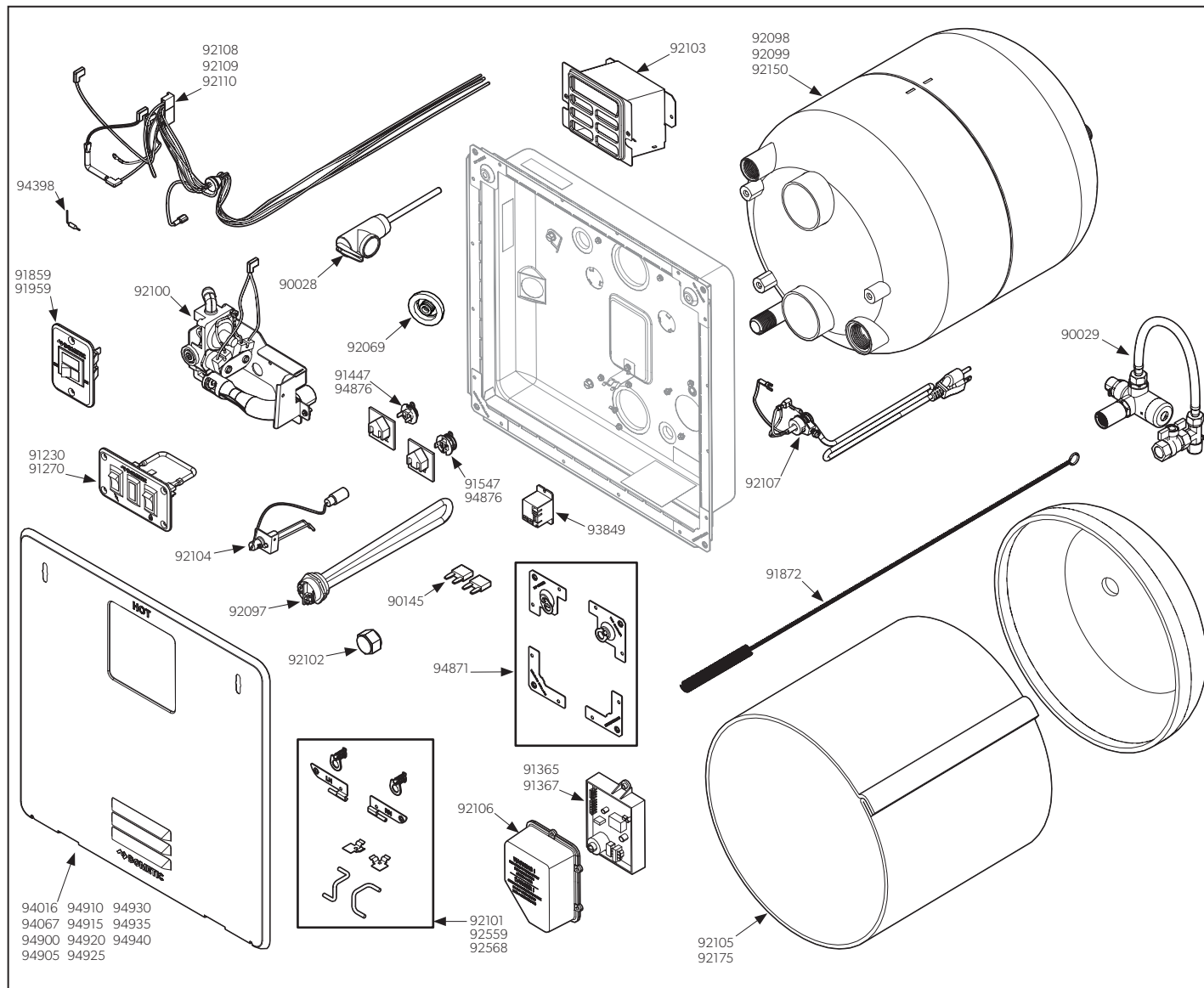
EN

## L.P. Gas Water Heaters

Service Kit Parts List .....2

### **WARNING**

Cancer and Reproductive Harm  
[www.P65Warnings.ca.gov](http://www.P65Warnings.ca.gov)

**Service Center & Dealer Locations**Visit: [www.dometic.com](http://www.dometic.com)**1 Service Kit Parts Illustrations****1 Service Kits by Part Number**

## 2 Service Kit Parts Descriptions

6A	6GEA	9GEA <sup>1</sup>	10GEA	16GEA <sup>2</sup>	Service Kit Number	Description
X	X	X	X	X	90028	KIT, SVC P&T VALVE 3/4" 150 PSI LD
		X		X	90029	KIT, SVC XT VALVE
X	X	X	X	X	90145	KIT, SVC FUSE 2 AMP
	X	X	X	X	91230	KIT, SVC DUAL SWITCH WHITE
	X	X	X	X	91270	KIT, SVC DUAL SWITCH BLACK
	X	X	X	X	91365	KIT, SVC IGNITION GAS ELECTRIC BOARD
X					91367	KIT, SVC IGNITION GAS BOARD
X	X		X		91447	KIT, SVC DSI/TSTAT&ECO (NEW SEAL) (BLISTER)
		X		X	91547	KIT, SVC DSI/TSTAT&ECO XT (NEW SEAL)
X					91859	KIT, SVC SINGLE SWITCH WHITE
X	X	X	X	X	91872	KIT, SVC MAIN BURNER BRUSH
X					91959	KIT, SVC SINGLE SWITCH BLACK
X	X	X	X	X	92069	KIT, SVC GROMMET, PAN
	X	X	X	X	92097	KIT, SVC ELEMENT
X					92098	KIT, SVC 6 GAL E TANK
	X	X			92099	KIT, SVC 6 GAL EV TANK
X	X	X			92100	KIT, SVC 6 GAL GAS SYSTEM
X	X	X	X	X	92101	KIT, SVC DOOR HARDWARE (like 91858 but with vent and new DOOR label)
X	X	X	X	X	92102	KIT, SVC DRAIN CAP X2 (BLISTER)
X	X	X	X	X	92103	KIT, SVC FLUE BOX ASSY
X	X	X	X	X	92104	KIT, SVC IGNITOR (BLISTER)
X	X	X			92105	KIT, SVC 6 GAL INSULATION
	X	X	X	X	92106	KIT, SVC JUNCTION BOX, GASKET, SCREWS
	X	X	X	X	92107	KIT, SVC POWER CORD
X					92108	KIT, SVC WIRING E
	X		X		92109	KIT, SVC WIRING EC
		X		X	92110	KIT, SVC WIRING EC XT
			X	X	92150	KIT, SVC 10 GAL EV TANK
			X	X	92175	KIT, SVC 10 GAL INSULATION
			X	X	92200	KIT, SVC 10 GAL GAS SYSTEM
X	X	X	X	X	92559	KIT, SVC CLIP DOOR HINGE
X	X	X	X	X	92668	KIT, SVC HINGE PIN
	X	X	X	X	93849	KIT, SVC RELAY
	X	X	X	X	94398	KIT, SVC THERMAL CUT-OFF
X	X	X	X	X	94871	KIT, SVC CORNER BRACKETS
X	X	X	X	X	94876	KIT, SVC SEAL RAIN GUARD
X	X	X			94900	KIT, SVC 6 GAL BLACK DOOR

6A	6GEA	9GEA <sup>1</sup>	10GEA	16GEA <sup>2</sup>	Service Kit Number	Description
X	X	X			94905	KIT, SVC 6 GAL ARCTIC WHITE DOOR
X	X	X			94910	KIT, SVC 6 GAL BEIGE #11 DOOR
X	X	X			94915	KIT, SVC 6 GAL OYSTER WHITE #52 DOOR
X	X	X			94920	KIT, SVC 6 GAL TAN #50 DOOR
X	X	X			94925	KIT, SVC 6 GAL GOSHEN GRAY #43 DOOR
X	X	X			94930	KIT, SVC 6 GAL CHAMPAGNE #51 DOOR
X	X	X			94935	KIT, SVC 6 GAL CHAMPAGNE #54 DOOR
X	X	X			94940	KIT, SVC 6 GAL MERCEDES BRILLIANT SILVER #36 DOOR
			X	X	95500	KIT, SVC 10 GAL BLACK DOOR
			X	X	95505	KIT, SVC 10 GAL WHITE DOOR

<sup>1</sup>The water heaters actual capacity is 6 gallons respectively. The effective capacity, calculated gallons of 130°F (54°C) moderated water is 9 gallons.

<sup>2</sup>The water heaters actual capacity is 10 gallons respectively. The effective capacity, calculated gallons of 130°F (54°C) moderated water is 16 gallons.