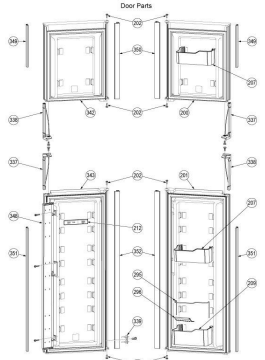


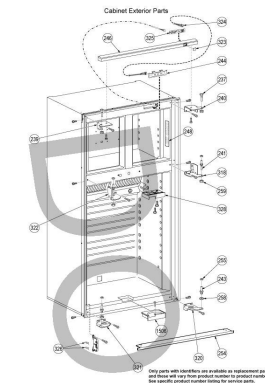
Mobile living made easy.

REFR,1350SL,PNL/MANUAL LOCK ( ) | Product No 958703831 | Dometic Parts Web

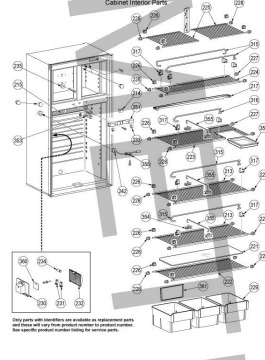
RM1350M Service Part Identifier Illustration



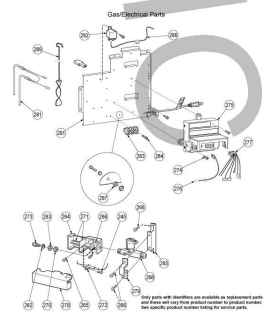
Only parts with this filter are available as replacement parts and must only be used against approval by product owner. See specific product number listing for service parts.



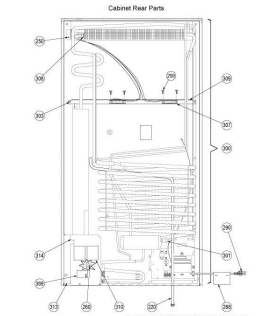
Only parts with this filter are available as replacement parts and must only be used against approval by product owner. See specific product number listing for service parts.



Only parts with this filter are available as replacement parts and must only be used against approval by product owner. See specific product number listing for service parts.



Only parts with this filter are available as replacement parts and must only be used against approval by product owner. See specific product number listing for service parts.



Only parts with this filter are available as replacement parts and must only be used against approval by product owner. See specific product number listing for service parts.

958703831 3110463 300 18/2017

Mobile living made easy.

REFR,1350SL,PNL/MANUAL LOCK () | Product No 958703831 | Dometic Parts Web

Part assemblies Complete appliance

PartNo	Pos	Qty	Description	Specifications
3851058044	200		S,DOOR ASM,FRZ,R,PNL-1350/SL	
3851129050	201		S,DOOR ASM,FF,R,PNL-1350/SL	
2931171090	202		S,BUSHING,DR HING,17MM,BLK9000	
3850973045	207		S,SHELF,DR,UPR,CLR,NO TEXTURE	
3851052047	209		S,SHELF,DR,LWR,CLR,NO TEXTURE	
3851235014	212		S,LABEL,DR WARNING	
3851236020	213		S,SHELF ASM,WIRE,WHT,RM1350	
3851270029	214		S,DR AIR DEVICE,1350 MANUAL	
3851166011	215		S,FIN PACK ASM-1350/SL	
3851050017	217		S,DRIP TRAY,CLR,RM1350,S410	
2932115013	218		S,PLUG,DRAIN HOSE,NAT,4-13CF	
3316102.903	220		S,HOSE ASM,DRAIN-1350	
2931117226	221		S,CVR,CRISPER SHELF,CLR,PLASTI	
3851236012	222		S,SHELF ASM,WIRE,WHT,S410G	
3851237010	223		S,SHELF ASM,WIRE,MLK,WHT,S410G	
3851236038	224		S,SHELF ASM,WIRE,WHT,S410G	
3851023014	225		S,SHELF,WIRE,FRZ-WHT,S410G	
3316450.901	226		S,CLIP,SHELF WIRE,GEN 2	
2932101013	227		S,PLUG,WIRE SHELF,6/7/8/9/1350	
2932103019	228		S,PLUG,WIRE SHELF,6/7/8/9/1350	
3851089015	229		S,BIN,CRISPER,CLR	
3850960018	230		S,LIGHT ASM-7/9/1350	
2932108018	231		S,TERMINAL,LIGHT HOUSING	
3850960018	232		S,LIGHT ASM-7/9/1350	
3851000020	233		S,SWITCH,SHORT ARM-7/9/1350	
2007290006	234		S,BULB 12V/10W	
3858010147	235		S,WASHER,ALUM,5.2*22*1.5MM	
2932647015	237		S,PIN,HINGE,UPR-6,7,8,9 CF	
3850989058	239		S,HINGE,UPR,L,BLK9000-7/9/1350	
3850989066	240		S,HINGE,UPR,R,BLK9000-7/9/1350	
2932648021	241		S,PIN,HINGE,MID,BLK,6-9 1350	
2002301006	242		S,PLUG,W/HOLE-THERMISTOR,RM2XX	
2932649029	243		S,HINGE PIN,LWR	
3850964036	244		S,BUTTON ASM,2W,9K-7/9/1350	
3858002052	245		S,SCREW,RXS,3.5*6.5ZPBC-4-14CF	
3851072037	246		S,TOP DECOR,PNL,9K-1350/SL	
3851035000	248		S,INSTR LABEL	
3851290035	251		S,HSG,DR STRIKE,BLK 9K-1350	

Mobile living made easy.

REFR,1350SL,PNL/MANUAL LOCK () | Product No 958703831 | Dometic Parts Web

2932664106	254	S,KICKPLATE,W/FM,BLK9K-1350/SL
3858010022	255	S,WASHER,5.5*12MM,ZPBLK-4-14CF
3858010113	258	S,WASHER,6.4*12.5*1.6MM,ZPBC-
3858009057	259	S,NUT,M6*4,ZPBC
3311210.901	260	S,THRML SWTCH,60° MNT-BLR JKT
140207044	263	S,NUT,GAS ORIF,M12*1.25-6H
2932161017	264	S,BURNER HSG ASM,.088
3858039039	265	S,SCREW,MRX-TT/SW,M4*8-ZPBC
3858002144	267	S,SCREW,RXS,3.5*9.5,ZPBC
2932615020	268	S,VALVE,GAS,SOLENOID-1350,1402
3858010071	270	S,WASHER,12.5*18.5*1MM,ZPBC
2007484047	271	S,BURNER TUBE,60*12.5*1.0MM
2932781053	272	S,ELECTRODE,720MM,VER 2,RM1350
2007419332	273	S,JET,RUBY ASM,#76-1350
3858002151	274	S,SCREW,RXS,3.5*13,ZPBC
3851331011	275	S,PWR MODULE,HYDRA,BLK
3851059042	276	S,THERMISTOR ASM-8/9/1350
2954608010	277	S,WIRE ASM,RM1350
2931401018	278	S,SUPPORT,PRE-ELECTRODE
2932662014	279	S,BRKT,GAS VALVE ANTI-ROTATE
3850644620	281	S,HEATER,(2X) 60V,210W,RM1350
2007457001	282	S,WASHER,ALUM-8*12*0.5MM
3858022027	283	S,TERMINAL BLOCK/WIRE PROT,VL3
3858002185	284	S,SCREW,RXS,3.5*25,ZPBC
2954553034	286	S,WIRE ASM,FUSED 15A-RM1350
2932733005	288	S,TAG,GRND INSTRUCTIONS,ENG/FR
2932667054	289	S,BAFFLE ASM-RM1350,1402
2002699219	290	S,CORD,AC POWER,1000MM,7,9,13,
3851475016	291	S,HOLDER,ELEC COMPONENT
3851334007	292	S,RELAY,12V DC,40AMP,4-13CF
2932043017	293	S,BRKT,GAS VALVE BASE,RM1350,
3858018017	294	S,SCREW,TAP,M5*25,ZPS-6-13CF/
3850976022	295	S,RAIL,DR SHELF,WHT,1350
3858009016	297	S,NUT,HEX,M4*3.2,ZPBC
3858089018	299	S,SCREW,EML,5*10,ZP,BLK-6-10/
3313470.088	300	S,CU ASM,949SLE
0173228008	301	S,COVER,CU VESSEL,BLK,6-13CF
3858068012	303	S,SCREW,SLFDRL,4.8*19MM,
3851183016	307	S,FAN,92MM,T=25MM
3850306063	308	S,SWTCH,THERMAL,FAN-6-13CF

Mobile living made easy.

REFR,1350SL,PNL/MANUAL LOCK () | Product No 958703831 | Dometic Parts Web

3851390041	309	S,4/FAN BRKT,RM1350SL
3850582002	310	S,LABEL,GAS RV
3851204010	313	S,PLATE,BASE,REAR-818MM
2932155019	314	S,PROTECTION PLATE,REAR
2007337252	315	S,RAIL,SHELF,594MM,1350
2007337179	316	S,RAIL,SHELF,398MM,RM1350,
2930693045	317	S,HOLDER,WIRE SHELF RAIL-
3851187041	318	S,HINGE,MID,R,BLK9000-7/9/1350
3851197040	320	S,HINGE,BTM,R,9K-7/9/1350/SL
3851197032	321	S,HINGE,BTM,L,9K-7/9/1350/SL
3851187033	322	S,HINGE,MID,L,BLK9000-7/9/1350
3850970017	323	S,LENS-SMOKE GREY
2954568016	324	S,CABLE,CONTROL
3851485023	325	S,DISPLAY CARD PCB-1350
3851212013	326	S,PLATE,CONTACT
3851102032	328	S,GUIDE,TOP FLAPR,BLK9K-1350
3851267033	337	S,HANDLE,PNL DR,MAN,FRZ R,FF L
3851267041	338	S,HANDLE,PNL DR,MAN,FRZ L,FF R
3851214027	339	S,HOLDER,PROBE ASM,BLK9K-1350
3851058051	342	S,DOOR ASM,FRZ,L,PNL-1350/SL
3851129068	343	S,DOOR ASM,FF,L,PNL-1350/SL
3858071024	346	S,SCREW,ETP,14MM,BC,NEA1402
3851104038	348	S,DR FLAPPER ASM-RM1350
3851056038	349	S,PRFL,TRIM,FRZ DR,HNDL,9K-135
3850982152	350	S,PRFL,TRIM,FRZ DR,HNG,9K-1350
3851056048	351	S,PRFL,TRIM,FF DR,HNDL,9K-1350
3850982160	352	S,PRFL,TRIM,FF DR,HNG,9K-1350
3851041016	353	S,PIPE,DRAINING
3851208011	354	S,BRKT,BAR,SHELF DIVIDER,WHT
3851209019	355	S,RAIL,SHELF DIV,WHT,RM1350
2932636018	357	S,BIN,STORAGE,MILK SHELF,WHT
2932463025	358	S,CLAMP,CABLE,12.5 DIA,WHT
3850960018	360	S,LIGHT ASM-7/9/1350
3850600010	369	S,PROTECT,BLOW OUT
3858002276	374	S,SCREW,RXS,4.2*16,ZPBC
3858002177	439	S,SCREW,RXS,3.5*19,ZPBC
3858002102	482	S,SCREW,RXS,2.9*9.5,ZPBC-1350
3106753.001	1500	S,HOLDER,BOTTLE,WHT
2933729028	1501	S,PROTECTOR,EDGE,L=335MM
165521030	1530	S,RIVET,PUSH,GREY-BEIGE