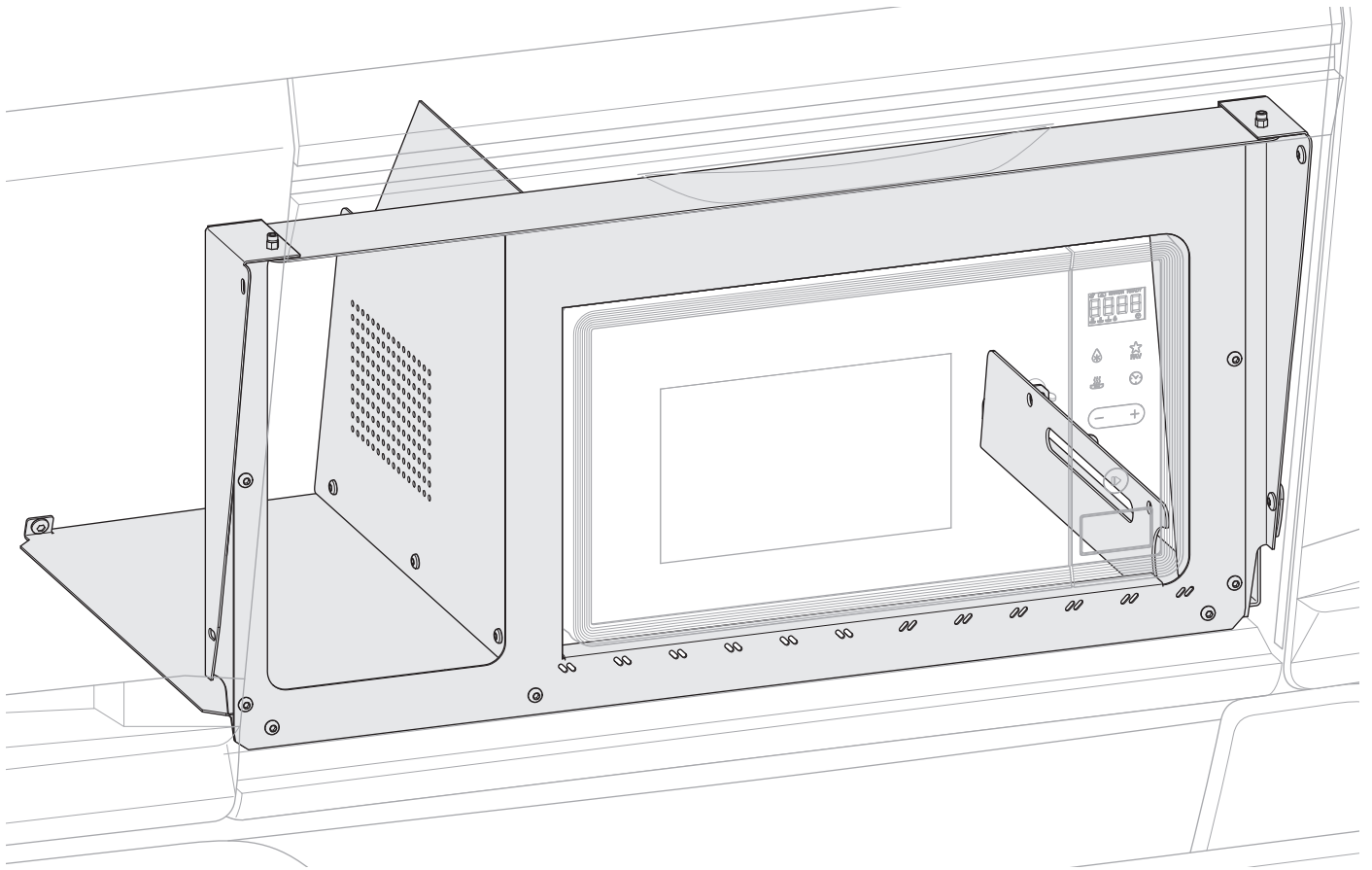
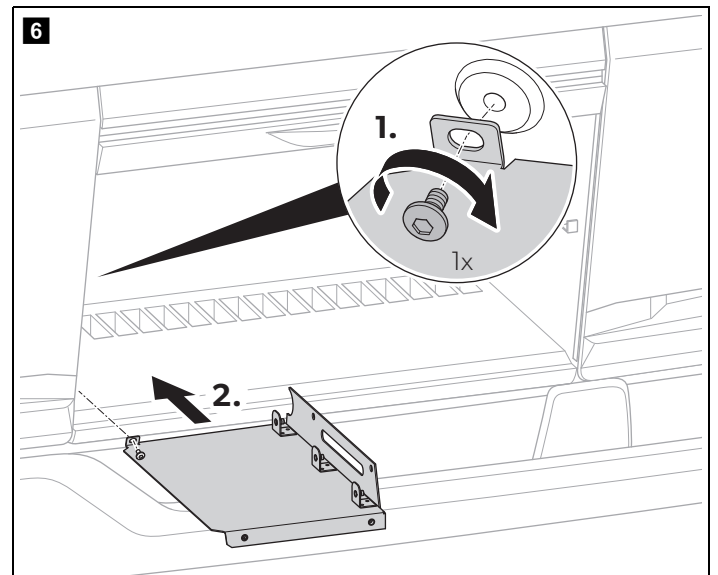
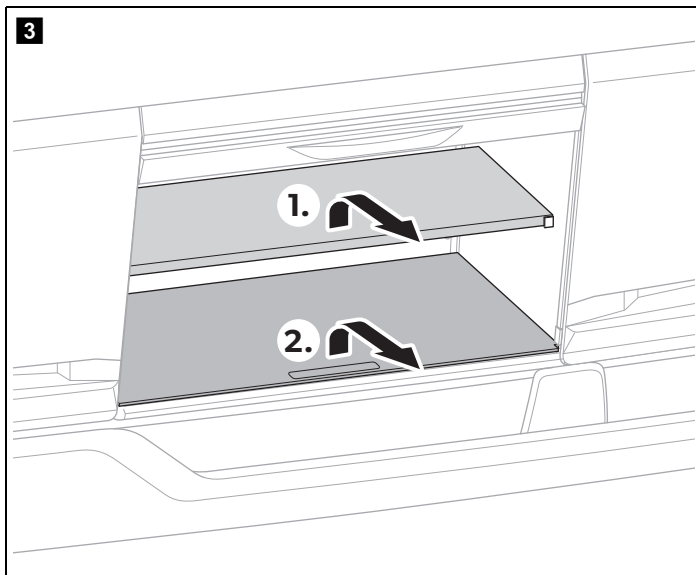
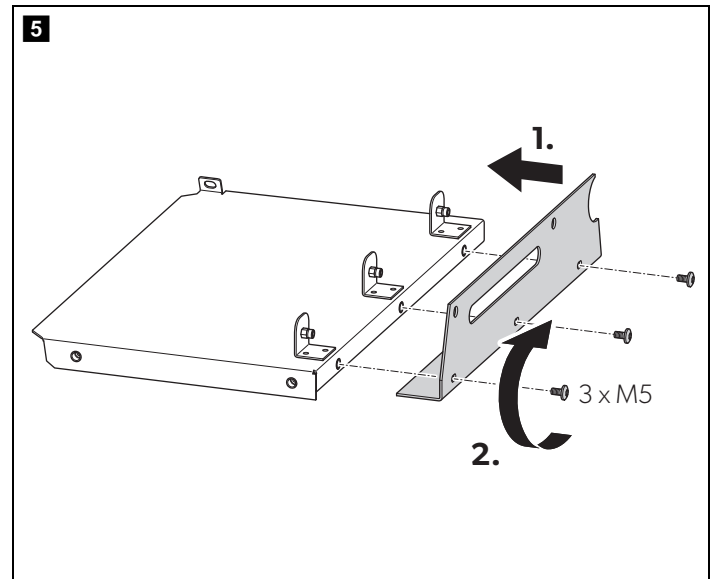
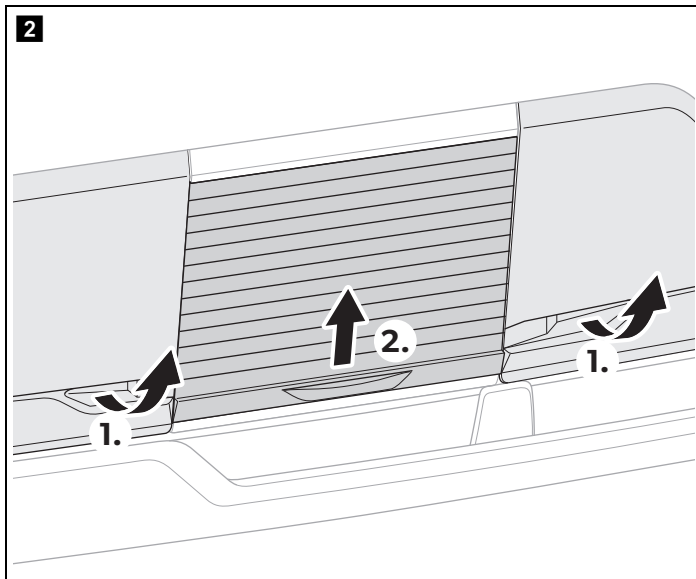
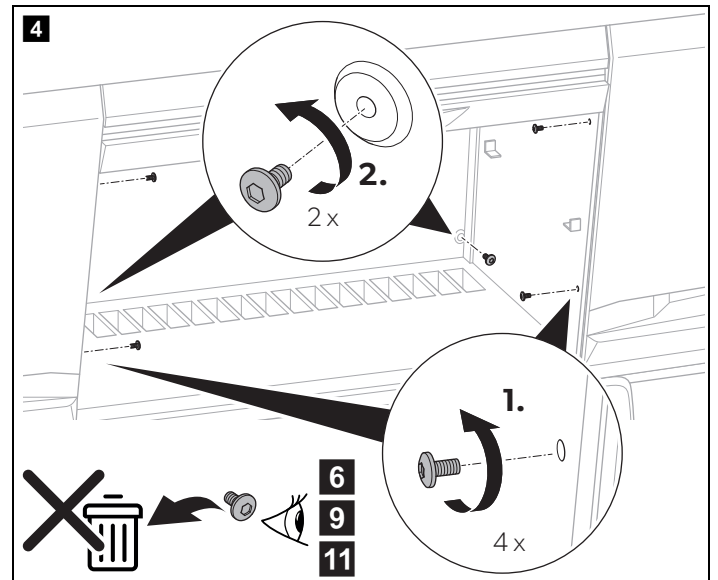
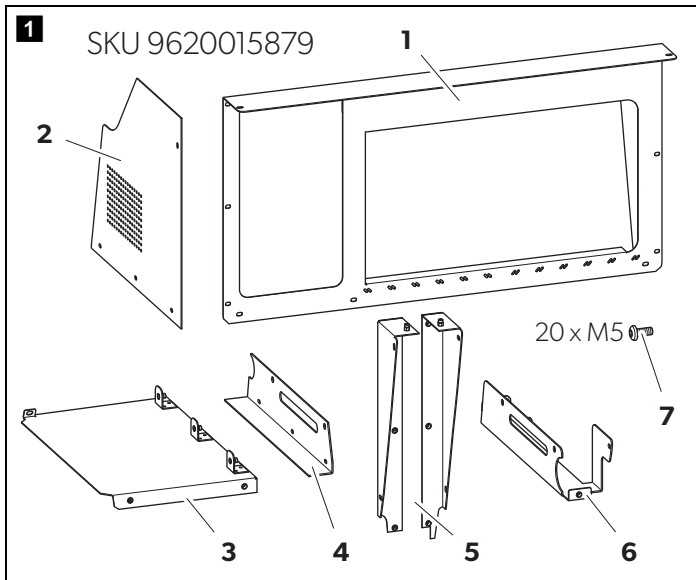


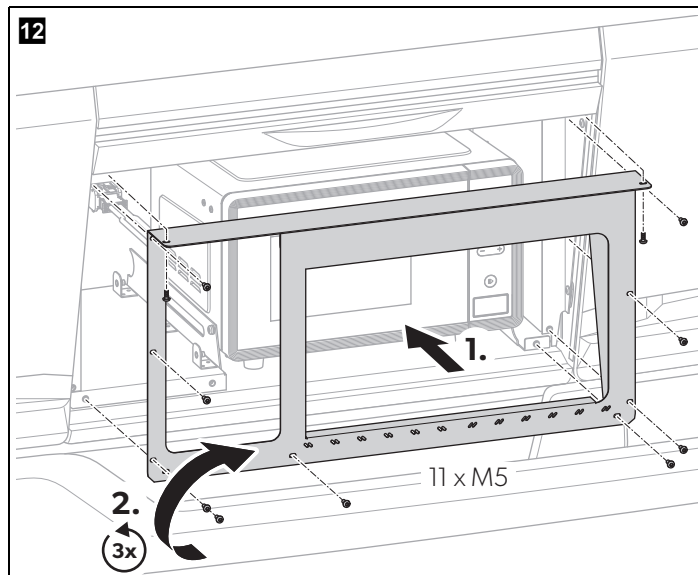
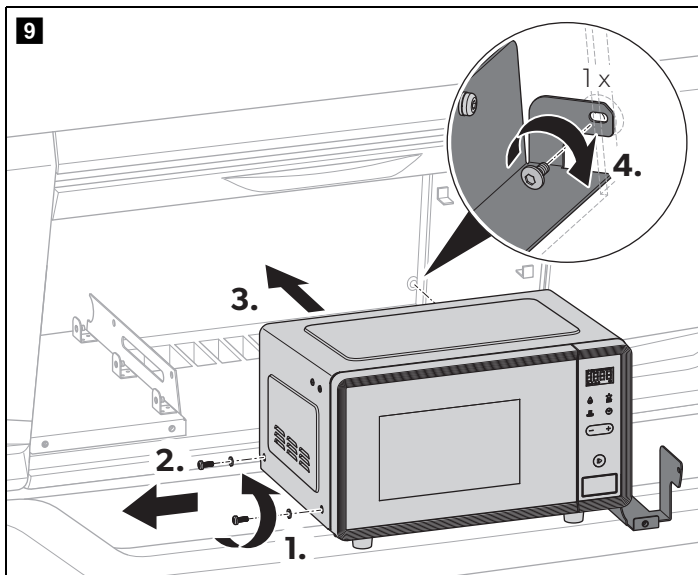
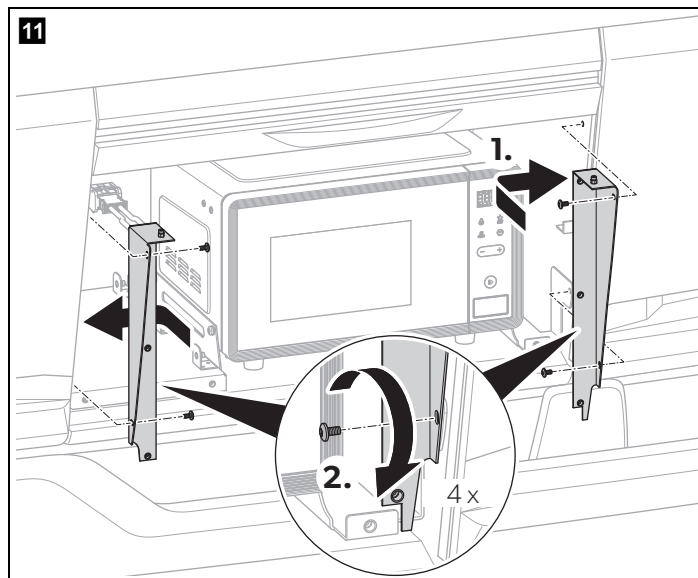
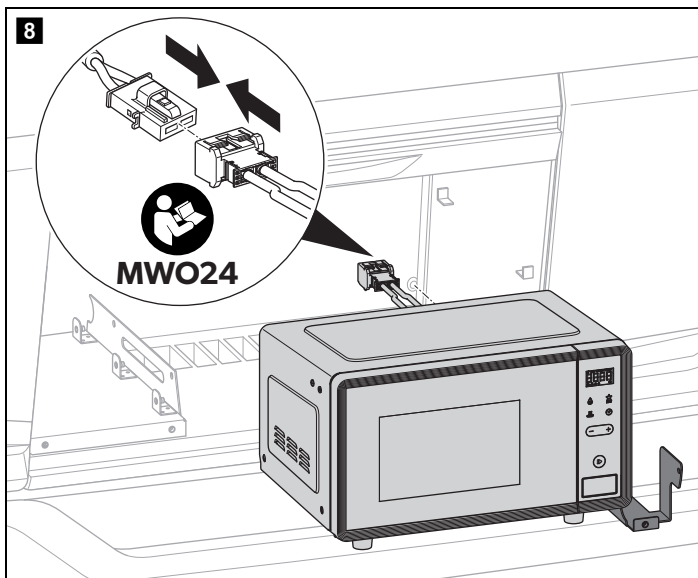
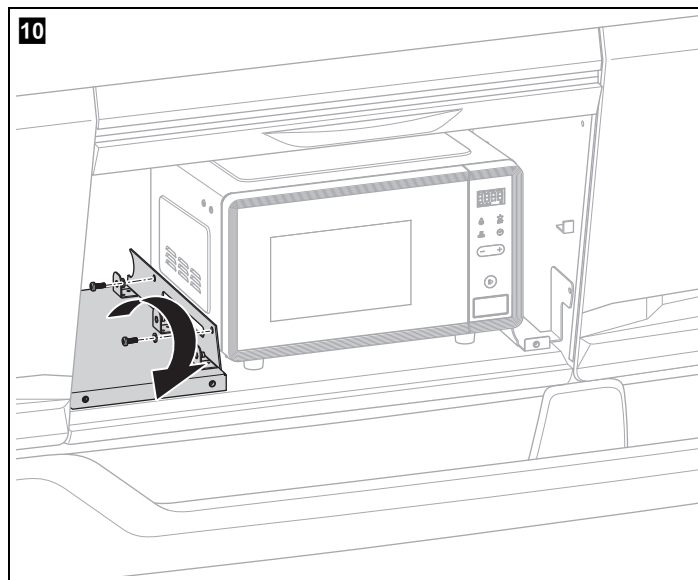
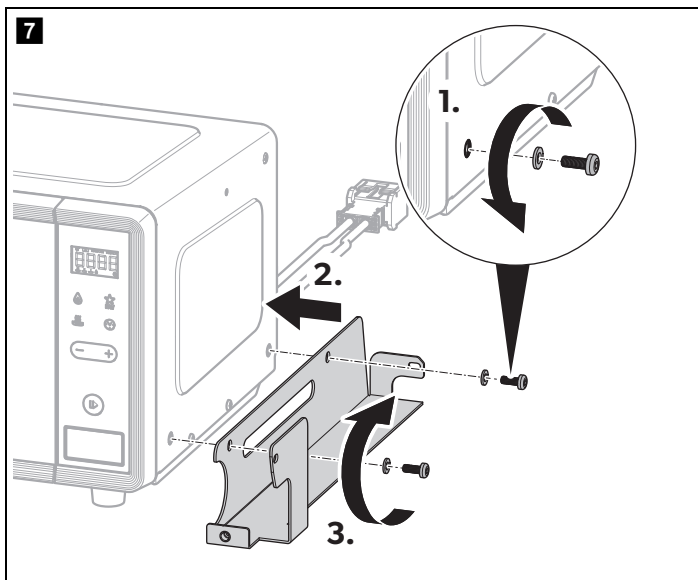
↗ DOMETIC
COMPLEMENTARY
PRODUCTS
MICROWAVES

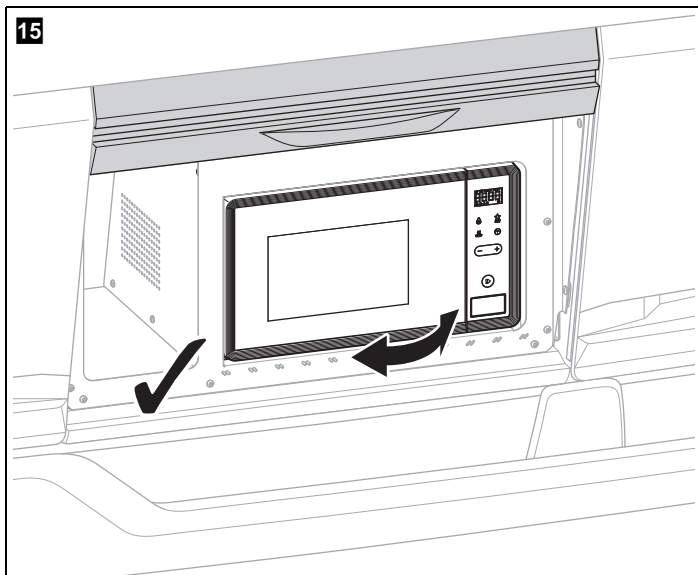
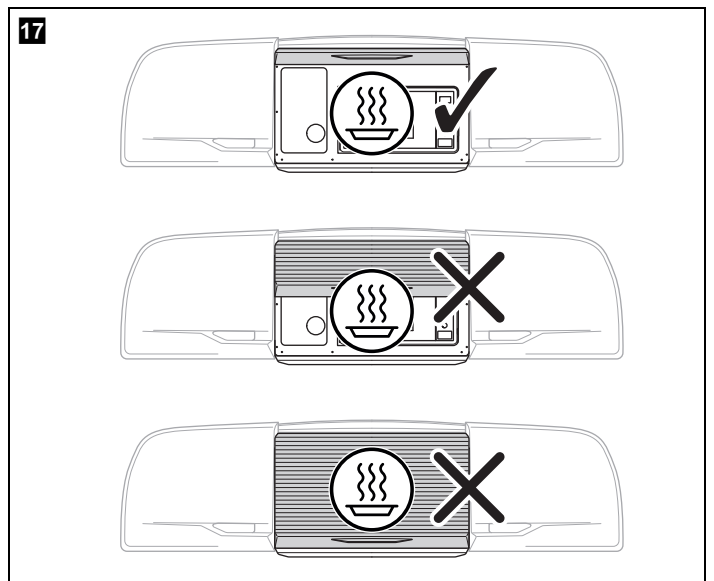
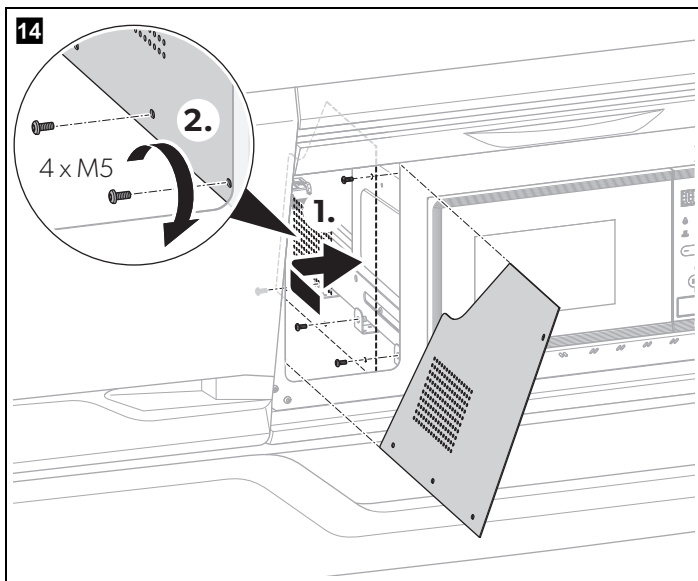
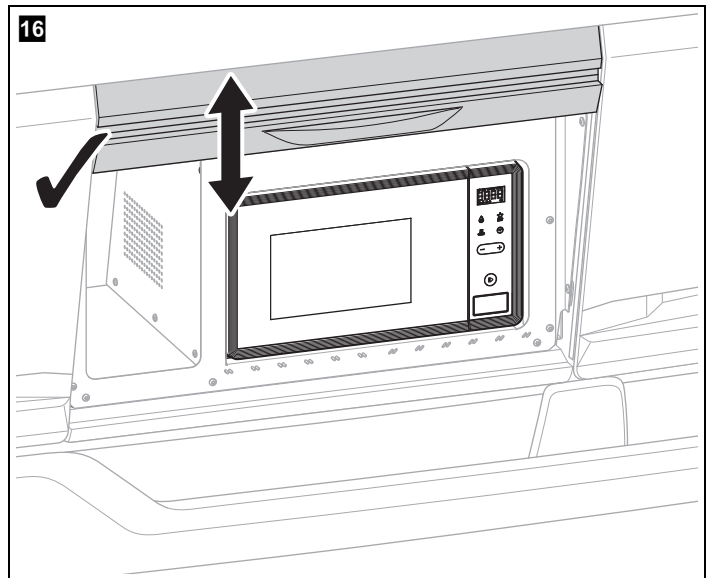
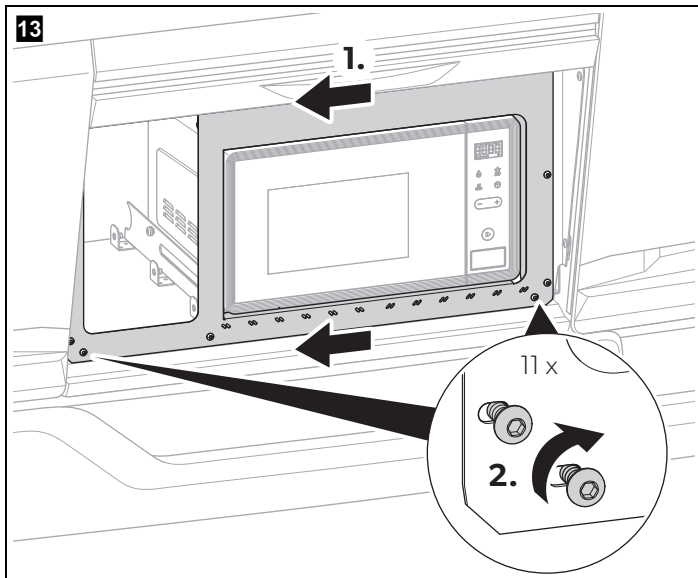


MWO 24 fixing kit for MAN TG3 GX cabin MY 2020→

© 2024 Dometic Group. The visual appearance of the contents of this manual is protected by copyright and design law. The underlying technical design and the products contained herein may be protected by design, patent or pending patent. The trademarks mentioned in this manual belong to Dometic Sweden AB. All rights are reserved.









dometic.com

**YOUR LOCAL
DEALER**

dometic.com/dealer

**YOUR LOCAL
SUPPORT**

dometic.com/contact

**YOUR LOCAL
SALES OFFICE**

dometic.com/sales-offices