

# DOMETIC REWORK KIT SERVICE MANUAL

Equipment Included: Please check below

Recommended Tools:

Work gloves,  
Screwdriver with bit attachment  
Allen 3mm bit  
Torx 25 Bit  
Socket wrench 8mm  
Side cutter  
Soap water  
Soft cloth or brush

Time Required: 25 Min

Recommended number of people: 1

**Product Suitable For:** SPX1200-T (SKU 9600011575, 9600025657, 9600026439 and 9600049687)

## RELATED DOCUMENTS

You find this service manual in more languages online



## EQUIPMENT INCLUDED

- 1 pcs. Sealing tape (2450 × 50 × 3 mm) (1)
- 3 pcs. Sealing tape (140 × 15 × 5 mm) (2)
- 3 pcs. Sealing compound (76 × 13 × 10 mm) (3)
- 1 pcs. Adhesive sealing strip (L= 2450 mm) (4)



## STEP 1: PREPARE THE UNIT FOR REWORK

### Disassemble outer housing

1. Release the ten fastening screws and disassemble the top cover.



Note: for SKU 9600025657 and SKU 9600049687, remove the three original sealing foams from top cover before proceeding with STEP 2



## STEP 2: SEALING ON THE TOP COVER

### Seal the connection pipe outlet on the top cover

1. Place the small sealing tape (2) along the edge of the corrugated pipe outlet of the top cover.



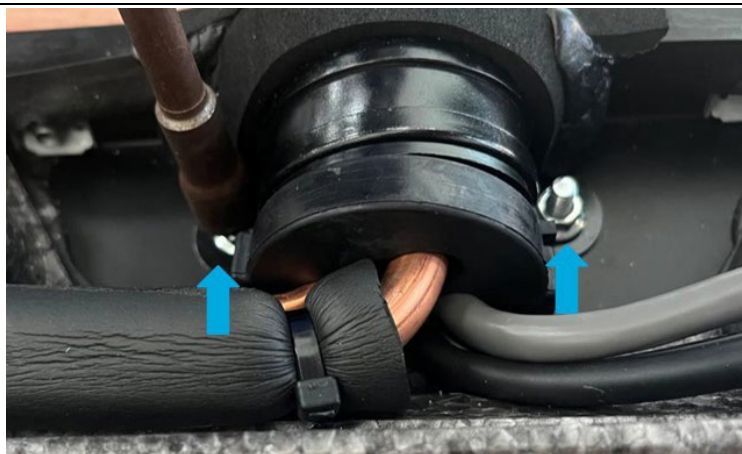
2. Place the sealing tape (1) all around on the inside of the top cover as shown.  
Cut the excessive sealing tape (1) if needed and connect the sealing tape (1) to the small sealing tape (2) end-to-end.



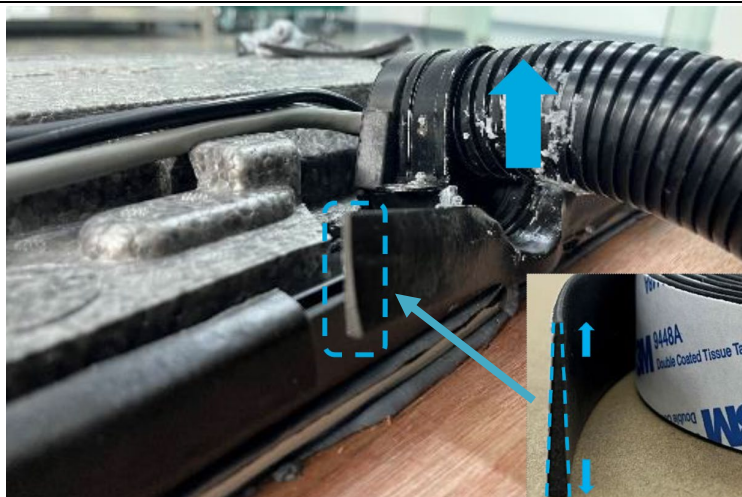
## STEP 3: SEALING ON THE BASE PAN

### Seal the edge of the base pan

1. Unscrew the two screws of the clamp that fixes the corrugated pipe.



2. Lift the clamp and the corrugated pipe and place the adhesive sealing strip (4) along the base pan edge and under the corrugated pipe. When placing the adhesive sealing strip, make sure that the thicker side is facing downwards, and the thinner edge is facing upwards.





3. Bend the excessive part of the sealing strip inward along the base pan edge, cut the excessive sealing strip (if needed) and connect the sealing strip end-to-end.

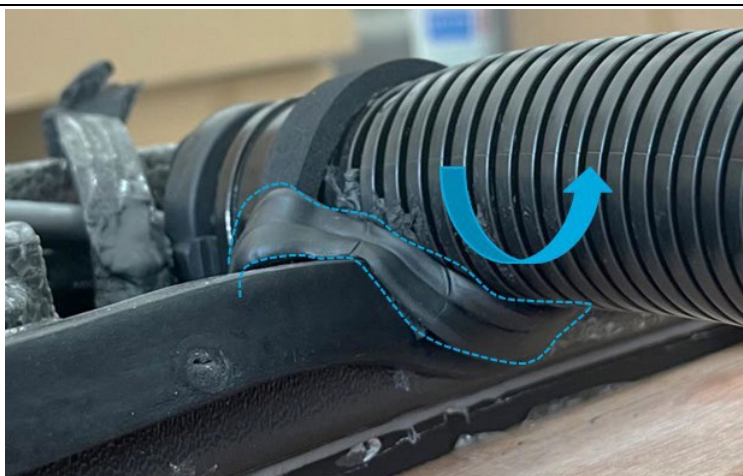


#### STEP 4: SEALING ON THE CORRUGATED PIPE

1. Place 1pcs of sealing tape (2) on the corrugated pipe.



2. Organize 1pcs of sealing compound (3) to wrap the corrugated pipe evenly from bottom to top.



3. Ensure both ends of sealing compound cover the sealing tape (2).



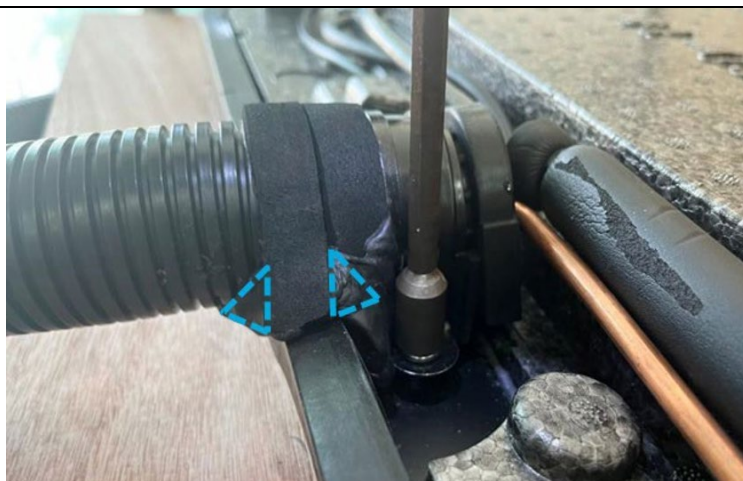
- Place 1pcs of sealing tape (2) on the corrugated pipe, along the edge of the first sealing tape.



- Press the corrugated pipe, clamp to the metal base pan, and screw the two screws to fix the clamp.



- Check that the area is covered by the sealing compound (3) marked in blue triangle.



#### STEP 5: SEAL OF WIRING AND CONDENSATE OPENING

##### Sealing of the wiring cut through.

- Organize 1pcs of sealing compound (3) and seal the wiring cut through in the EPP housing with it.





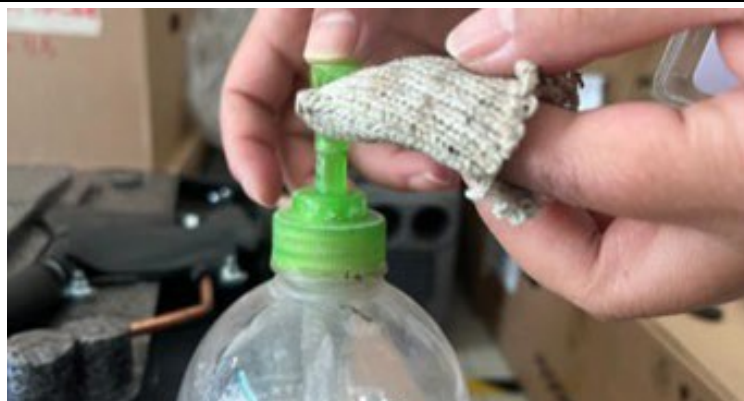
2. Organize 1pcs of sealing compound (3) and seal the passage of the condensate hose in the housing with.



## STEP 6: ASSEMBLING OF TOP COVER

### Preparing the adhesive sealing strip

1. For easier assembly, please apply some soapy water to the outside of the adhesive sealing strip with a soft cloth or brush.



- 
2. Put the plastic top cover on the unit and pull the top cover over the outer edge of the adhesive sealing strip and ensure the sealing strip is under the plastic top cover.



**Caution!**

Press down the plastic top cover evenly at each corner and ensure that when the top cover is in place, no sealing strip is squeezed out.



- 
3. Fix the top cover with the screws



---

NOTICE: When reassembling the unit make sure that no cables are pinched and all loose parts (sealing material residues and so on) are removed from the system