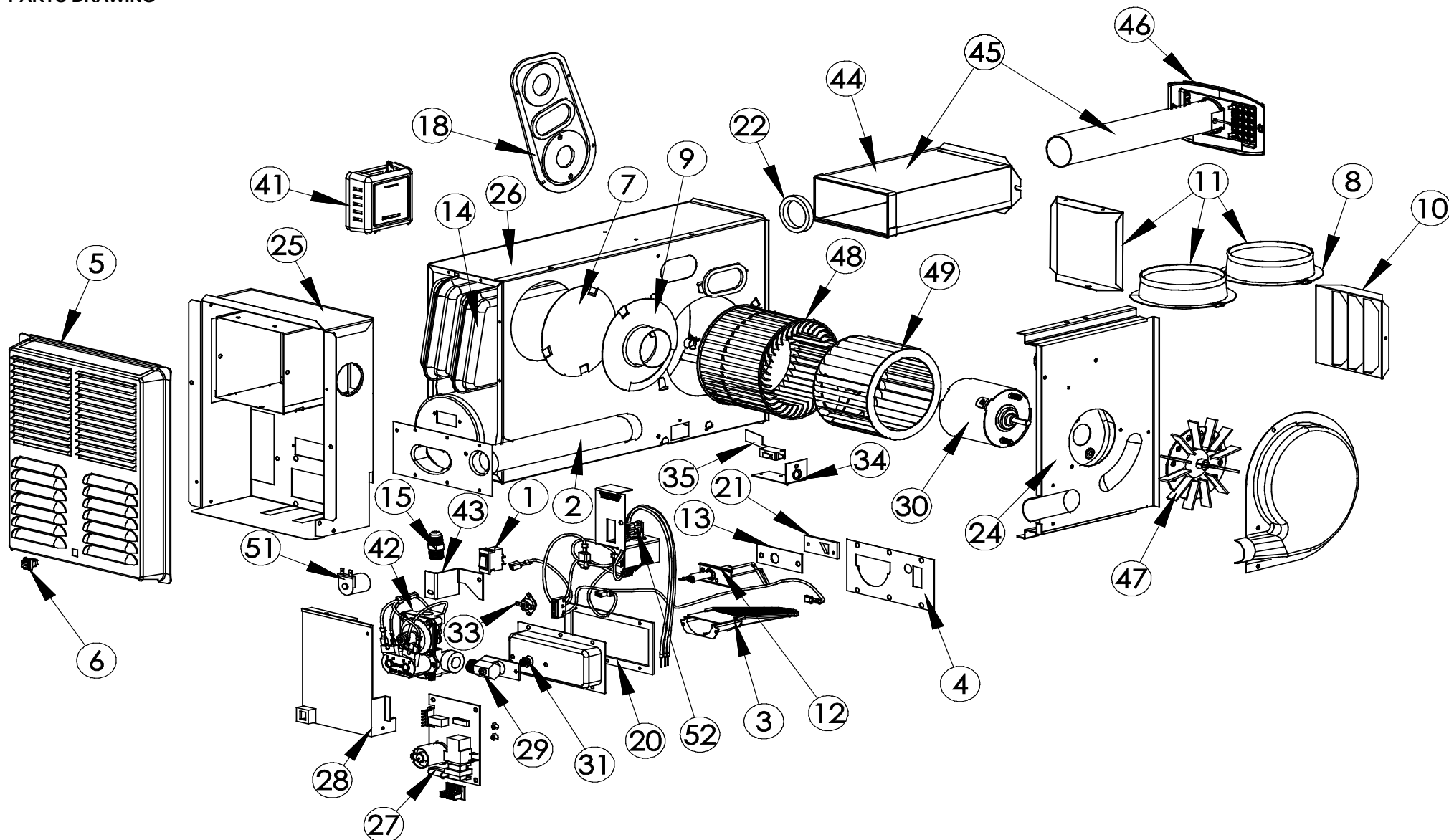




**PARTS DRAWING**



**PARTS LIST**

Item	Category	P/N	Title	8012_II	7912_II	7916_II	7920_II	Item	Category	P/N	Title	8012_II	7912_II	7916_II	7920_II
1	<b>Breaker, Circuit</b>	34007	CIRCUIT BREAKER/ON_OFF SWITCH	X	X	X	X	29	<b>Manifold</b>	37391	MANIFOLD,W/R 3/8 SIDE OUT	X	X	X	X
2	<b>Burners</b>	35892	BURNER AIR TUBE 79/80	X	X	X	X	30	<b>Motors</b>	31036	MOTOR, 79		X	X	X
3		36043	ASSY,BURNER HEAD COMPLETE	X	X	X	X			36122	MOTOR, 8012	X			
4		36147	BAFFLE,SECONDARY AIR 7916 7920			X	X	31	<b>Orifices</b>	31257	ORIFICE,#56,0.0465 HOLE			X	
		36258	BAFFLE,SECONDARY AIR,7912 8012	X	X					37389	ORIFICE,#62, 0.0380 HOLE	X	X		
5	<b>Doors</b>	37520	DOOR ASSY,79/80 MEADOWLARK	X	X	X	X			31265	ORIFICE,#1.25MM SWITCH,LIMIT 36TXV11,L170 TOD				X
		34193	DOOR ASSY,79/80 DULL BLACK 45	X	X	X	X	33	<b>Switches, Limit</b>	37021		X	X	X	X
		34271	DOOR ASSY,79/80 FRAME BLACK 44	X	X	X	X	34	<b>Switches, Sail</b>	36040	BRACKET,SAIL SWITCH	X	X	X	X
6		37912	FASTENER,1/4_TURN, NYLATCH	X	X	X	X	35	<b>Switches, Sail</b>	36134	SWITCH,SAIL,15 BL .780	X			
7	<b>Ducting</b>	31361	PLATE,DUCT COVER, 4 INCH	X	X	X	X			36133	SWITCH,SAIL,45 RED D40JRWAE		X	X	X
8		31474	ADAPTER,DUCT,4 INCH	X	X	X	X	41	<b>Thermostats</b>	38452	THERMOSTAT,HEAT ONLY,BROWN	X	X	X	X
9		36688	ADAPTER,DUCT,2 INCH	X	X	X	X			38453	THERMOSTAT,HEAT ONLY,WHITE	X	X	X	X
10		36959	DIRECTIONAL AIR BOX SEE 36955	X	X	X	X	42	<b>Valves</b>	38604	VALVE,SIDE OUTLET, 12VDC COIL	X	X	X	X
11		37452	KIT,79/80_II,SIDE DISCHARGE	X	X	X	X	43	<b>Valves</b>	37390	BRACKET,VALVE,79 3/8 SIDE OUT	X	X	X	X
12	<b>Electrode</b>	37517	ELECTRODE, CHF2 ASSY	X	X	X	X	51	<b>Valves</b>	31000	COIL,DC 7U VALVE REPLACEMENT	X	X	X	X
13		37079	COVER,ELECTRODE PLATE,SINGLE	X	X	X	X	44	<b>Vent, Exhaust</b>	35941	WELD,79/80, AIR BOX EXT, A	X	X	X	X
14	<b>Elements</b>	35903	WELD,79/80,CHAMBER	X	X	X	X			35951	WELD,79_II, AIR BOX EXT, C	X	X	X	X
15	<b>Fittings, Pipe</b>	31046	CONN,MALE, 3/8 X 3/8	X	X	X	X			35947	WELD,79_II, AIR BOX EXT, B	X	X	X	X
18	<b>Gasket</b>	37746	GASKET,NESTED	X	X	X	X	45	<b>Vent, Exhaust</b>	35957	KIT,VENT C, 79_II, ALUMINIZED	X	X	X	X
20		35890	GASKET,79/80,BURNER PLATE	X	X	X	X			35956	KIT,VENT B, 79_II, ALUMINIZED	X	X	X	X
21		37100	GASKET,ELECTRODE,SINGLE SENSE	X	X	X	X			35955	KIT,VENT A, 79_II, ALUMINIZED	X	X	X	X
22		37226	GASKET,EXHAUST TUBE	X	X	X	X	46	<b>Vent, Exhaust</b>	36448	ASSY,C VENT EXTENSION,AL	X	X	X	X
24	<b>General Parts</b>	36142	ASSY,MOTOR MOUNT 79/80	X	X	X	X			36446	ASSY,B VENT EXTENSION,AL	X	X	X	X
25		35912	CONTROL BOX, 79 80	X	X	X	X			36444	ASSY,A VENT EXTENSION,AL	X	X	X	X
26		36412	ASSY,79,SERVICE CASING		X	X	X	47	<b>Wheels</b>	33124	KIT,COMBUSTION WHEEL 79/80	X	X	X	X
		36413	ASSY,80,SERVICE CASING	X				48	<b>Wheels</b>	33286	KIT,BLOWER WHEEL & CLAMP 79		X	X	X
27	<b>Igniton, Controls</b>	31501	KIT,UNIVERSAL IGNITION DC	X	X	X	X	49	<b>Wheels</b>	33431	WHEEL,BLOWER 80	X			
28		37951	BRACKET, DSI MOUNTING, PLASTIC	X	X	X	X	52	<b>Wiring</b>	30230	KIT, WIRING HARNESS 79/80	X	X	X	X