

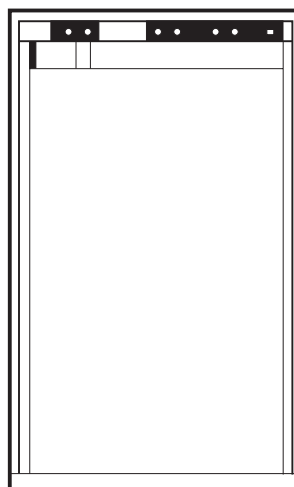


WHEN ORDERING SPARE PARTS, ALWAYS STATE:
MODEL — QUANTITY — PART NUMBER — DESCRIPTION
For Electric Details Also:
VOLTAGE — WATTAGE

Silhouette™

S1521, S1531

SPARE PARTS LIST



USA
SERVICE OFFICE
The Dometic Corp.
509 So. Poplar St.
LaGrange, IN 46761

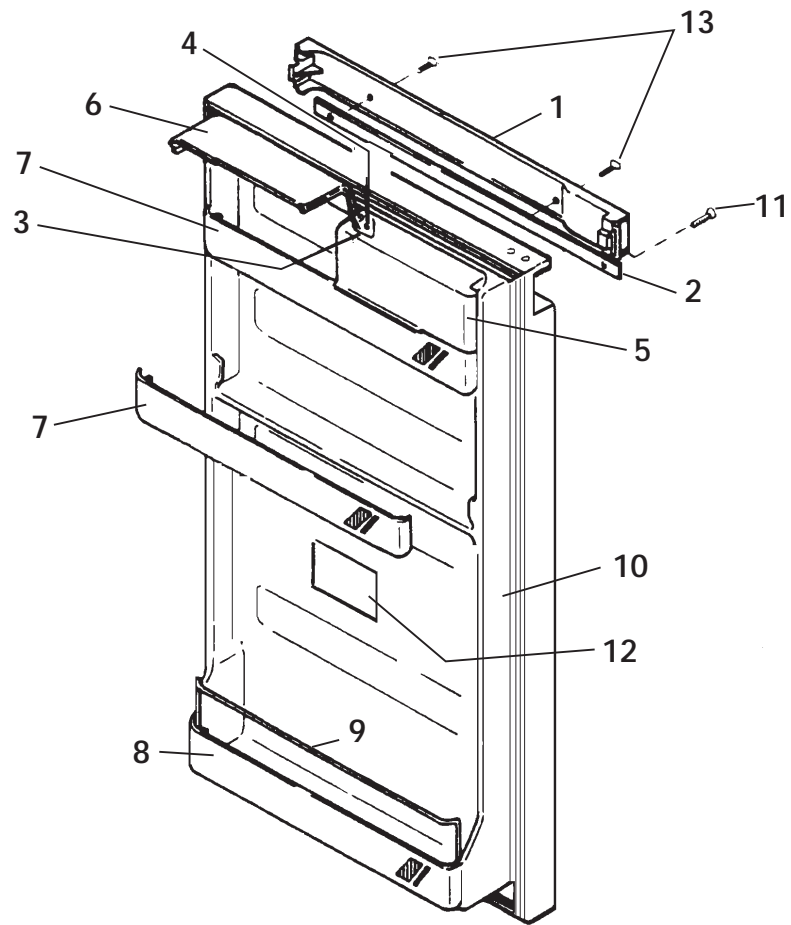
CANADA
Dometic Dist.
866 Langs Dr.
Cambridge, Ontario
CANADA N3H 2N7

PRODUCT NO.	MODEL	MARKET	VOLTAGE	HINGE
921900081	S1521	US, CAN	120 V	RH
921900091	S1521	US, CAN	120V	LH
921905461	S1531	US, CAN	12/120V	RH
921905471	S1531	US, CAN	12 /120V	LH
921905481	S1531	US, CAN	12/120V	RH
921905491	S1531	US, CAN	12/120V	LH

PARTS LIST

**REFRIGERATOR
MODELS
S1521
S1531**

DOOR PARTS

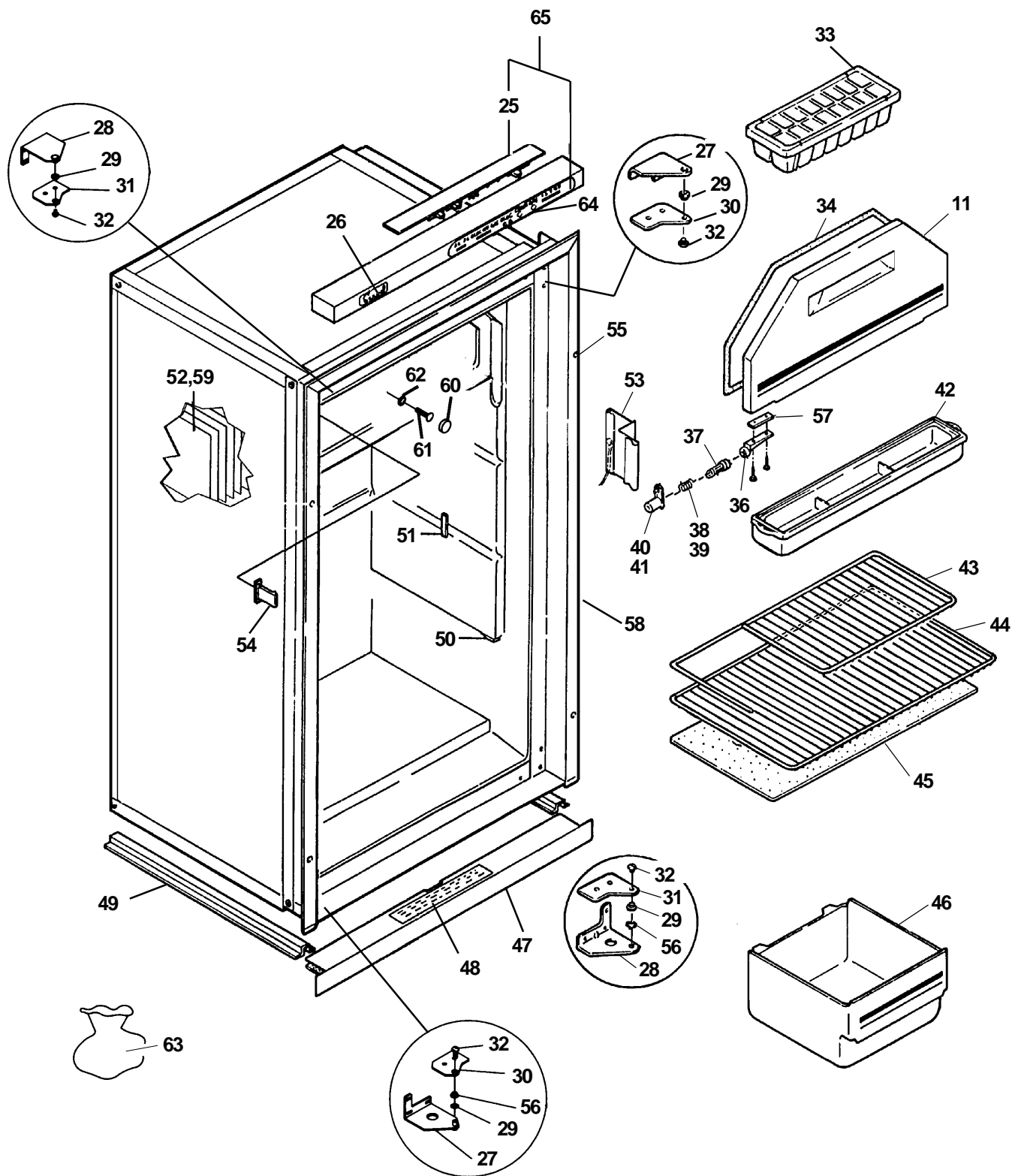


DOOR PARTS

MODELS		
S1521	=	A
S1531	=	B

Index #	Part No.	A	B	Description
1	2943709010	A	B	Handle, lock
2	2943149175	A	—	Strip, decoration (2-way)
	2943149183	—	B	Strip, decoration (3-way)
3	2943153003	A	B	Bracket
4	2943195004	A	B	Plug, white
5	2943152005	A	B	Cover, butter compartment, right
6	2943151007	A	B	Cover, butter compartment, left
7	2943366.019	A	B	Shelf, door (2 req.)
8	2943144028	A	B	Shelf, door
9	2943240008	A	B	Holder, bottle
10	2943206009	A	B	Door, refrigerator
11	2943671012	A	B	Screw, trim (2 req.)
12	2931620005	A	B	Label
13	2943671020	A	B	Screw, latch (2 req.)

FRONT VIEW



FRONT VIEW

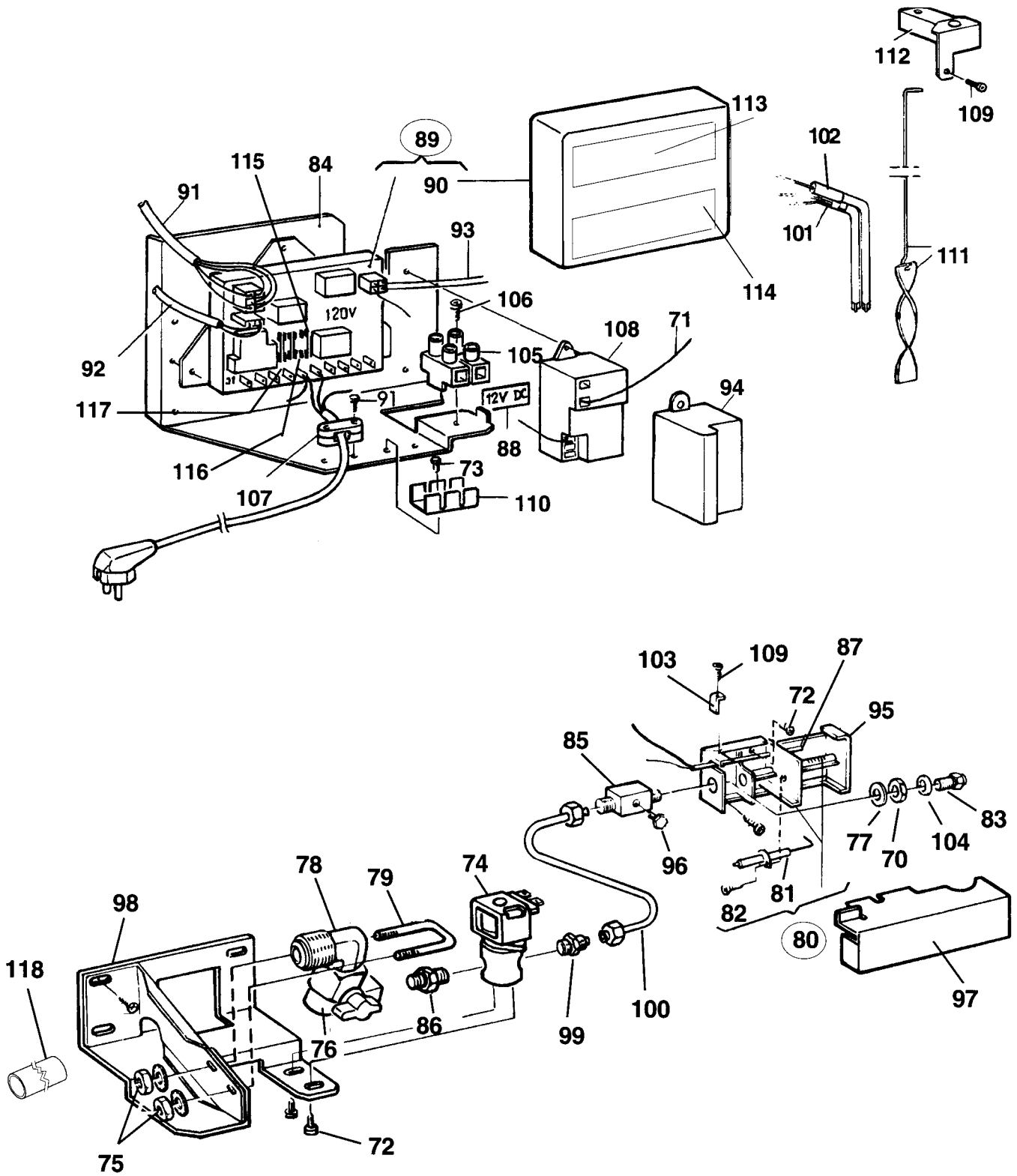
MODELS

S1521 = A

S1531 = B

Index #	Part No.	A	B	Description
25	2931847012	A	—	Circuit board, 2-way
	2931848010	—	B	Circuit board, 3-way
26	2932011014	A	B	Decoration
27	2943569000	A	B	Hinge, upper RH/Lower LH
28	2943570008	A	B	Hinge, upper LH/Lower RH
29	2943196002	A	B	Hinge, bushing (2 req.)
30	2943235008	A	B	Hinge support, upper RH/lower LH
31	2943236006	A	B	Hinge support, upper LH/lower RH
32	2943276002	A	B	Hinge pin (2 req.)
33	2943422.002	A	B	Ice tray (2 req.)
34	2943201000	A	B	Gasket, freezer
35	2943471009	A	B	Door, freezer
36	2002244008	A	B	Hinge plate (2 req.)
37	2002238000	A	B	Carrier for hinge (2 req.)
38	2002237002	A	B	Spring, freezer, LH
39	2002237010	A	B	Spring, freezer, RH
40	2002236004	A	B	Housing, freezer spring, LH
41	2002236012	A	B	Housing, freezer spring, RH
42	2943133013	A	B	Drip tray
43	2943180014	A	B	Shelf, milk
44	2943179016	A	B	Shelf, wire
45	2943178000	A	B	Shelf, glass
46	2943143020	A	B	Crisper (2 req.)
47	2943426011	A	B	Plate, toe
48	2944298005	A	—	Label, selection (2-way)
	2944299003	—	B	Label, selection (3-way)
49	2943129003	A	B	Rail, bottom support (2 req.)
50	2943128005	A	B	Retainer (2 req.)
51	2943131009	A	B	Retainer (2 req.)
52	2943385001	A	B	Evaporator
53	2931976019	A	B	Bracket, thermistor mounting
54	2943126009	A	B	Latch, door
55	2943434007	A	B	Cover (4 req.)
56	2943495008	A	B	Washer
57	2943418000	A	B	Hinge plate, support (2 req.)
58	2943700.423	A	B	Frame kit
59	2943711008	A	B	Screw, #10–24 x 1/2", HWHTK (3 req.)
60	2944202007	A	B	Cap, plastic (4 req.)
61	2943710000	A	B	Screw (4 req.)
62	2944203005	A	B	Washer (4 req.)
63	2943700.084	A	B	Bag, miscellaneous parts
64	2931875013	A	B	Cap, push button (4 req.)
65	0955000468	A	-	Front
	0955000476	-	B	Front

BURNER & CONTROLS



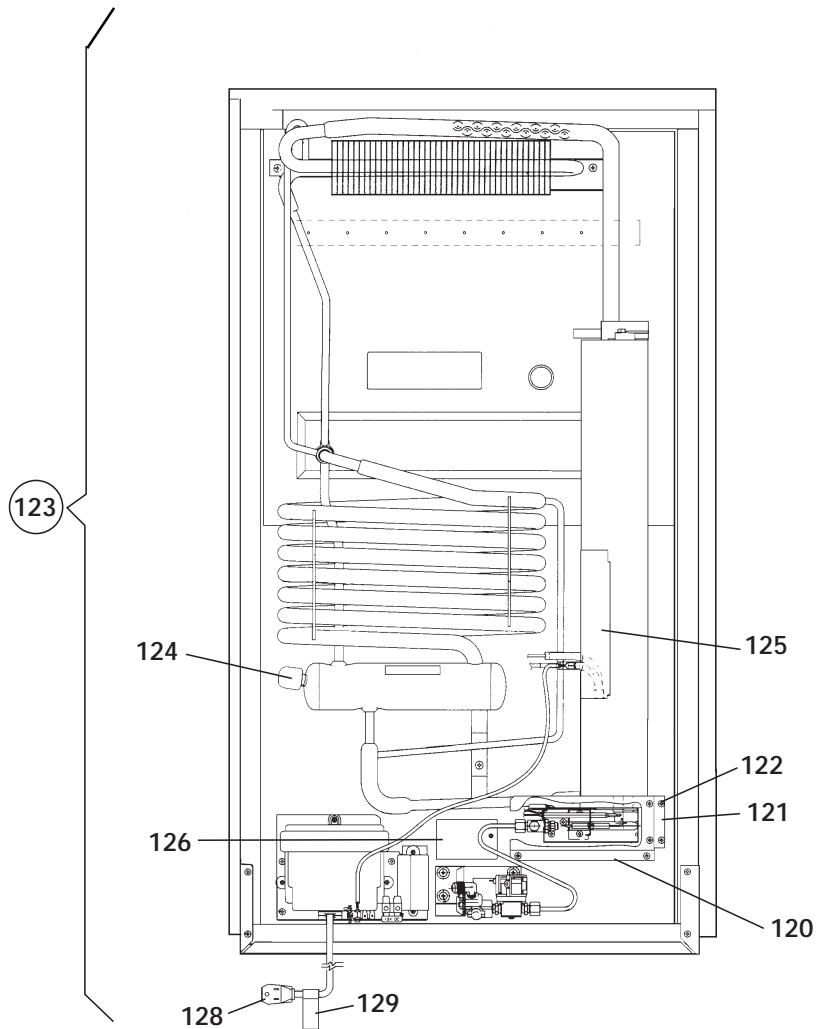
BURNER & CONTROLS**MODELS**

S1521 = A

S1531 = B

Index #	Part No.	A	B	Description
70	0140207044	A	B	Nut
71	2007668052	A	B	Conductor, electrode
72	7241287619	A	B	Screw, m4x8, zinc plated
73	7241289615	A	B	Screw, MRX, m4x10, zinc plated
74	2943298014	A	B	Valve, solenoid
75	2943286001	A	B	Nut, lock
76	2943299004	A	B	Valve, gas shut-off
77	7345842012	A	B	Washer
78	2931916015	A	B	Elbow, 90°
79	2943285003	A	B	U-bolt
80	2930697020	A	B	Burner
81	2930379009	A	B	Electrode
82	7295221019	A	B	Screw, BXS, B4x6, 5, zinc plated
83	2007419167	A	B	Jet, No. 43
84	2931822015	A	B	Retainer
85	2931227017	A	B	Nipple
86	2931825026	A	B	Nipple
87	2931826016	A	B	Thermocouple
88	2931827006	A	B	Sign plate
89	2931842039	A	—	Circuit board
	2931843045	—	B	Circuit board
90	2931858019	A	B	Cover
91	2931862011	A	B	Lead, 5-wire
92	2931863019	A	B	Thermistor w/lead
93	2931864017	A	B	Lead, gas valve
94	2931886010	A	B	Cover, ignitor
95	2931913012	A	B	Housing, burner
96	0169380003	A	B	Plug, screw test
97	2931572016	A	B	Cover, burner
98	2931915017	A	B	Bracket, gas valve
99	2932063015	A	B	Nipple
100	2931992016	A	B	Tube, gas
101	0173738139	A	B	Heater, 185w, 120V
102	0173739053	—	B	Heater, 175w, 12V
103	2930660010	A	B	Retainer
104	2007457001	A	B	Washer
105	2930463019	A	B	Terminal block
106	7295287408	A	B	Screw, RXS, B6x25, stainless
107	0561014010	A	B	Anti-strain clip
108	2931132019	A	B	Reignitor
109	7295279405	A	B	Screw, RXS, B6x10, zinc plated
110	2930327008	A	B	Terminal rail
111	2007590082	A	B	Baffle
112	2007598010	A	B	Top, flue
113	-- -- -- -- --	A	—	Decal (2-way)
	-- -- -- -- --	—	B	Decal (3-way)
114	-- -- -- -- --	A	—	Decal, wire conn. (2-way)
	-- -- -- -- --	—	B	Decal, wire conn. (3-way)
115	2943542007	A	B	Fuse, 5 Amp
116	2943541009	A	B	Fuse, 3 Amp
117	-- -- -- -- --	—	B	Fuse, 3.5 Amp
118	2932001015	A	B	Nose, thermocouple

CABINET, REAR VIEW

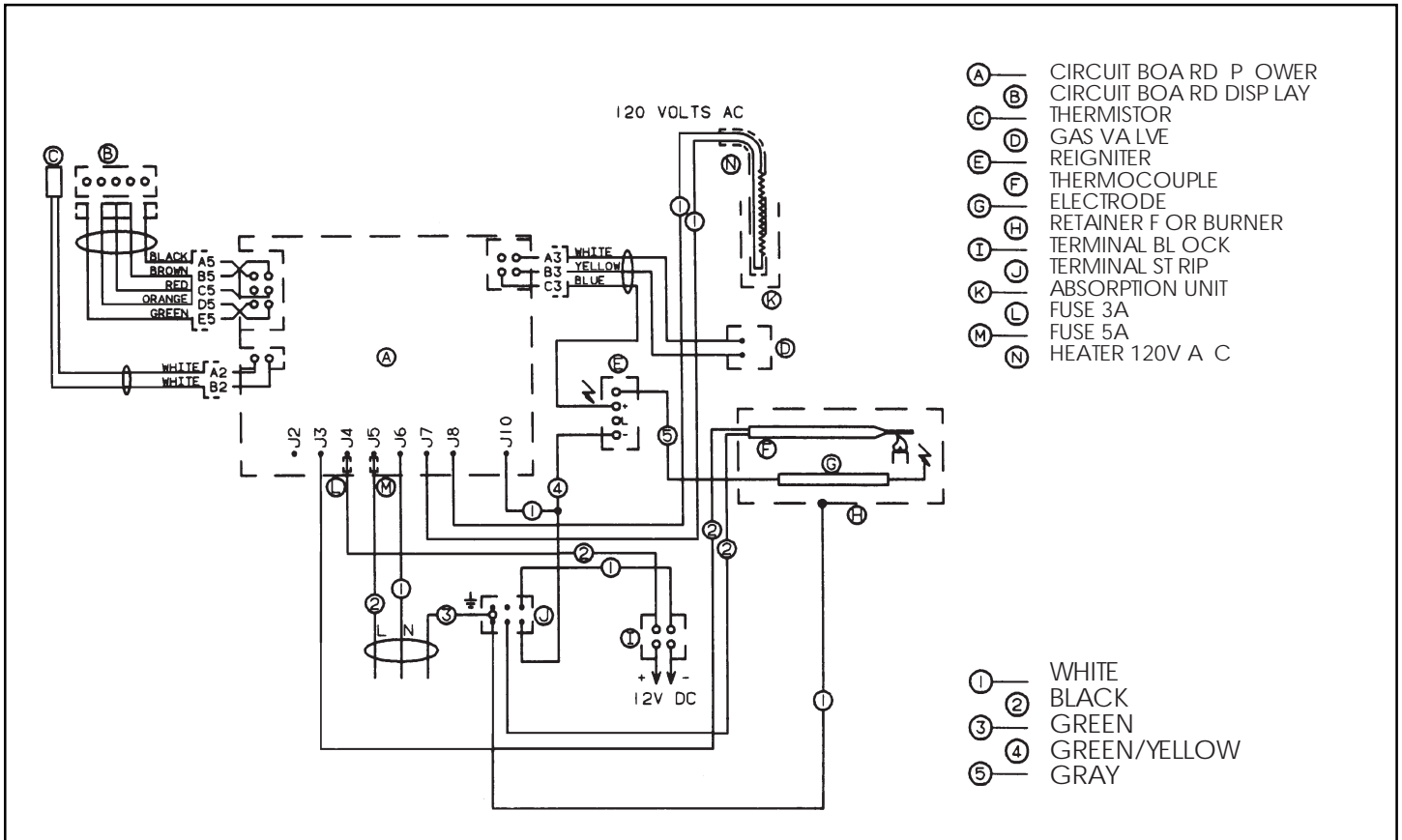


MODELS

S1521	=	A
S1531	=	B

Index #	Part No.	A	B	Description
120	2931830018	A	B	Protection plate
121	2931831016	A	B	Protection plate
122	7295340017	A	B	Screw, RXS, B8x9, 5, zinc plated
123	2934364098	A	B	Cooling unit, cpl.
124	0173228008	A	B	Cap
125	2800821007	A	B	Cover, heating element
126	7295279405	A	B	Screw, RXS, B6x10, zinc plated
127	2931503003	A	B	Sign plate "Installation clearances", not shown
128	2002699060	A	B	Cord set
129	2002576003	A	B	Decal

WIRING DIAGRAM FOR MODEL S1521 (2-WAY)



WIRING DIAGRAM FOR MODEL S1531 (3-WAY)

