

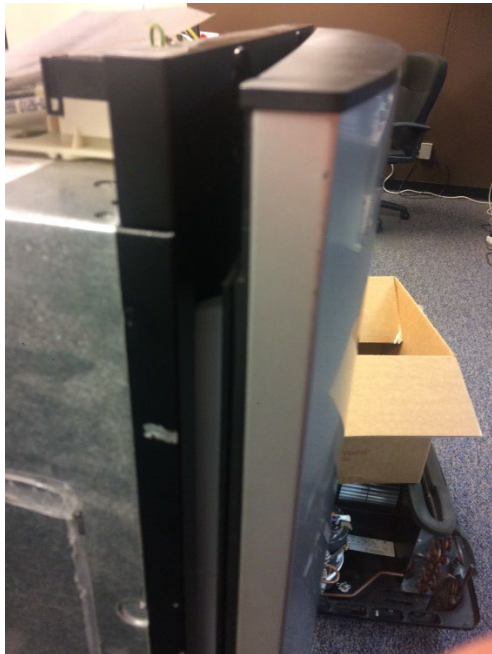
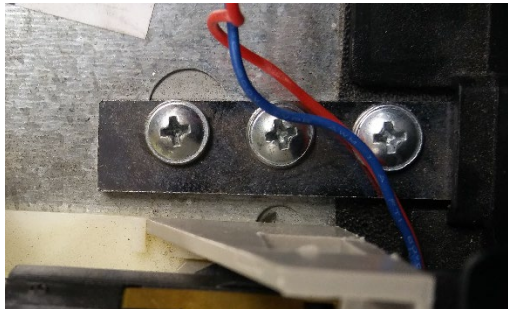


Mobile living made easy.

RML8330 R/L Door Stop Kit Instructions

Guide to Installing Door Stop Kit and Removal of Inside Cabinets

Demonstrated using a right hinged unit

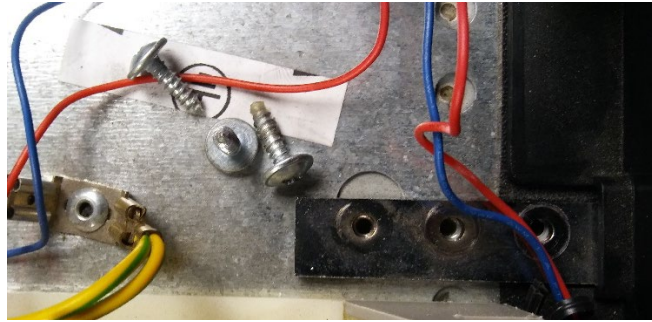
Power Off	
1. Ensure that the power to the fridge is disconnected	
Removal of Door	
1. Open the door so that it is almost closed but not latched yet	 A photograph showing the side profile of a black and silver refrigerator with its door open. The door is slightly ajar, and a cardboard box is visible inside the compartment.
2. Locate the 3 screws on the top of the fridge that are connecting the top door hinge to the fridge	 A close-up photograph of the top edge of the refrigerator's door hinge assembly. Three silver screws are visible, securing a metal plate. Red and blue wires are connected to the assembly.



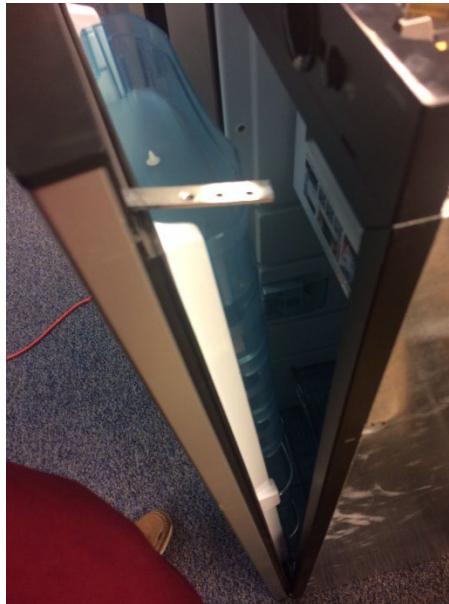
Mobile living made easy.

RML8330 R/L Door Stop Kit Instructions

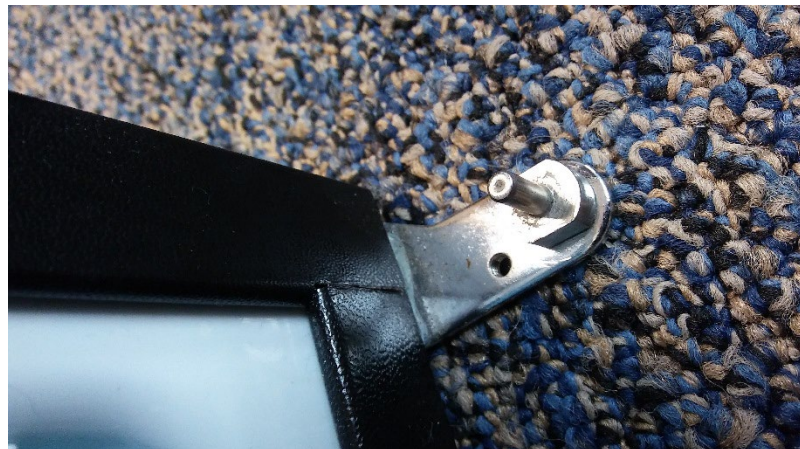
3. Remove the 3 screws attaching the top door hinge to the fridge



4. Pull the door out at the top and begin to lift upwards



5. Once the door is removed, locate the bottom hinge





Mobile living made easy.

RML8330 R/L Door Stop Kit Instructions

6. Remove the Pin that is connected to the bottom hinge



Installation of Door Stop

1. Install new hinge piece and the M4x5 hex head screw



2. Locate the trim screw on the bottom right of the door (Bottom Left of the door for a left sided hinge, Always opposite of handle side)





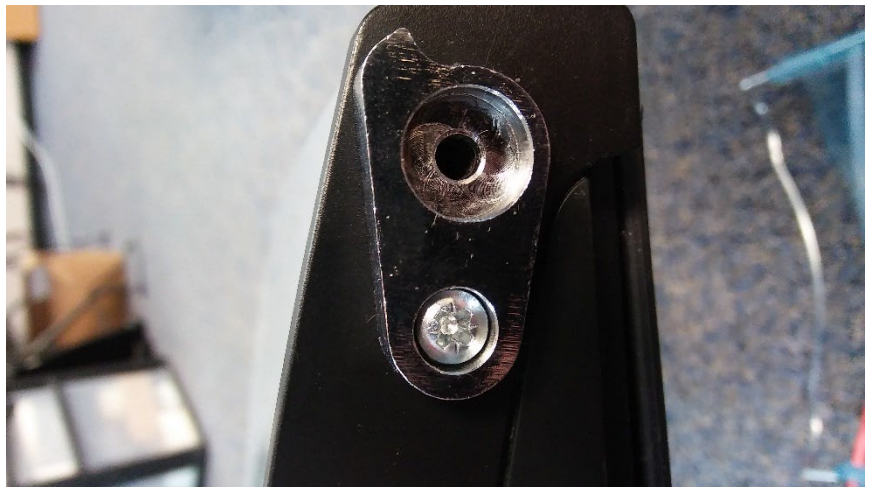
Mobile living made easy.

RML8330 R/L Door Stop Kit Instructions

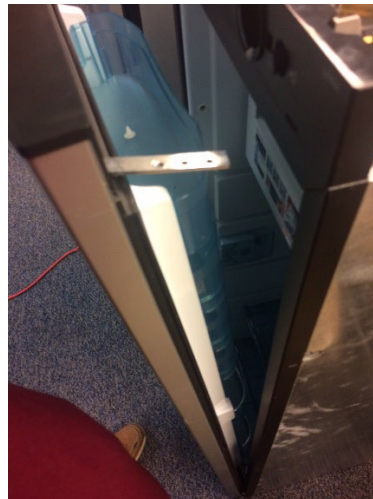
3. Remove the trim screw



4. Place the new door stop piece on the door and screw down using the new 4x20 screw that was included in the kit



5. Once door stop piece is attached to the door, place the bottom of the door onto the new pin on the bottom hinge





Mobile living made easy.

RML8330 R/L Door Stop Kit Instructions

6. Replace top hinge through slot in the trim, and reattach to the top of the fridge using the old Screws

