



When ordering parts, always state:
MODEL NO. - PRODUCT NO. - QUANTITY -
PART NUMBER - DESCRIPTION
For Electric Details also state:
VOLTAGE - WATTAGE

SERVICE OFFICE
Dometic Corporation
For Information
Contact:
www.dometic.com

REFRIGERATOR RM4601

Product Number	Model Number	Voltage	Refrig. Frame Color	Door Style	Door/Door Trim Color	Market	Brand
921144069	RM4601	240VAC	Brown	Surround	Brown	AU - NZ	Dometic

PARTS LIST

**MODEL
RM4601
Series**

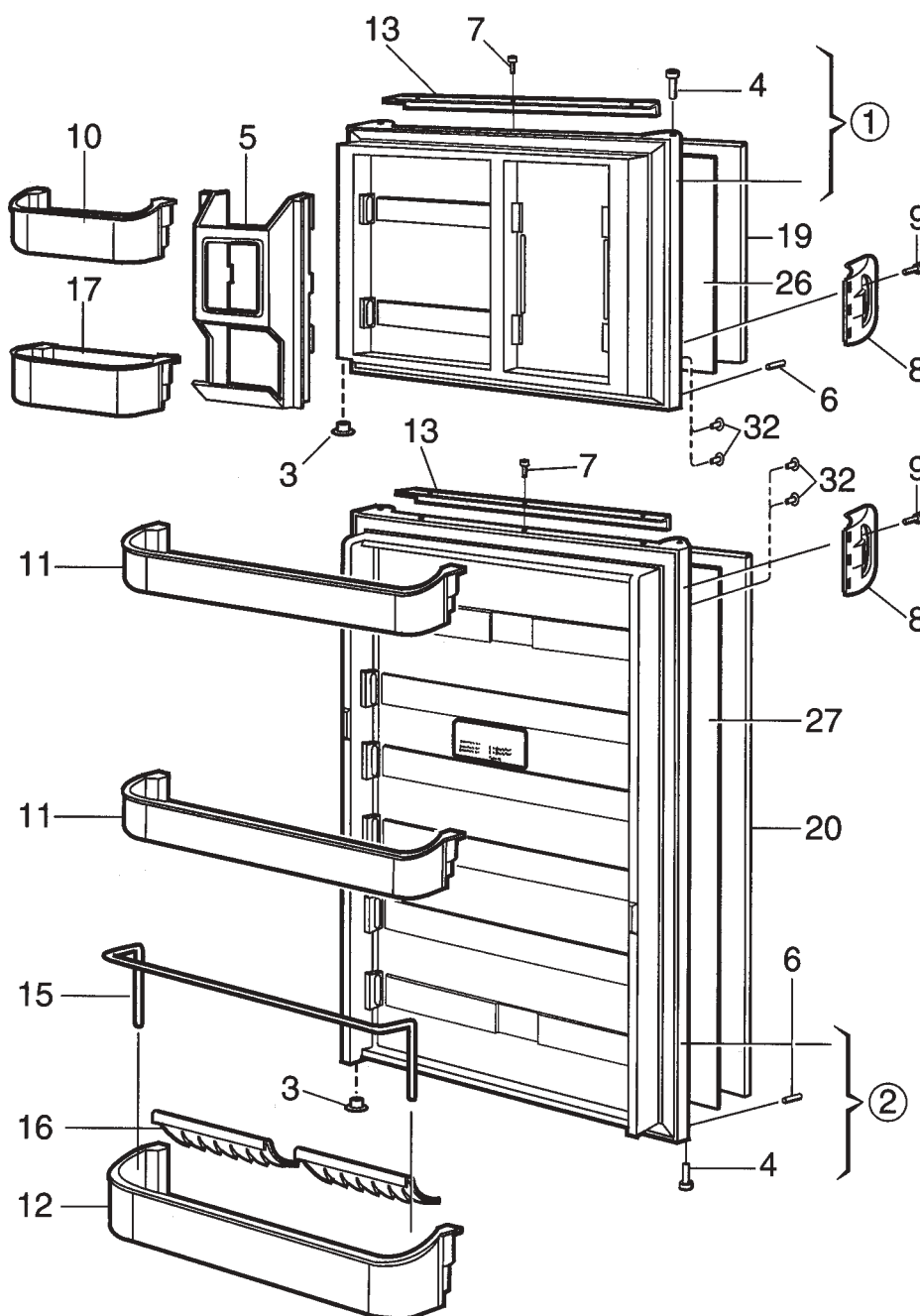
ALPHABETICAL INDEX

	Page#	Index#
Cabinet, Exterior Components	5-6	1-531
Cabinet, Interior Components	7-8	1-46
Cabinet, Rear View	11-12	100-145
Control & Burner Components	9-10	1-115
Door Assm.	3-4	1-32
Wiring Diagram	13	—

SPECIFICATIONS

Model	RM4601
Product Number	921144069
Energy Source	240 VAC, Gas
AC Heating Element	
Amperage	1.35
Ohm Resis. +/- 10%	177
Wattage	325
DC Heating Element	
Amperage	18
Ohm Resis. +/- 10%	0.67
Wattage	215
BTU's Gas Burner	1500
Jet Size	#58

DOOR ASSEMBLY



NCMOA2062866

Only Those Parts Identified With An Index Number Are Available For Service Replacement.

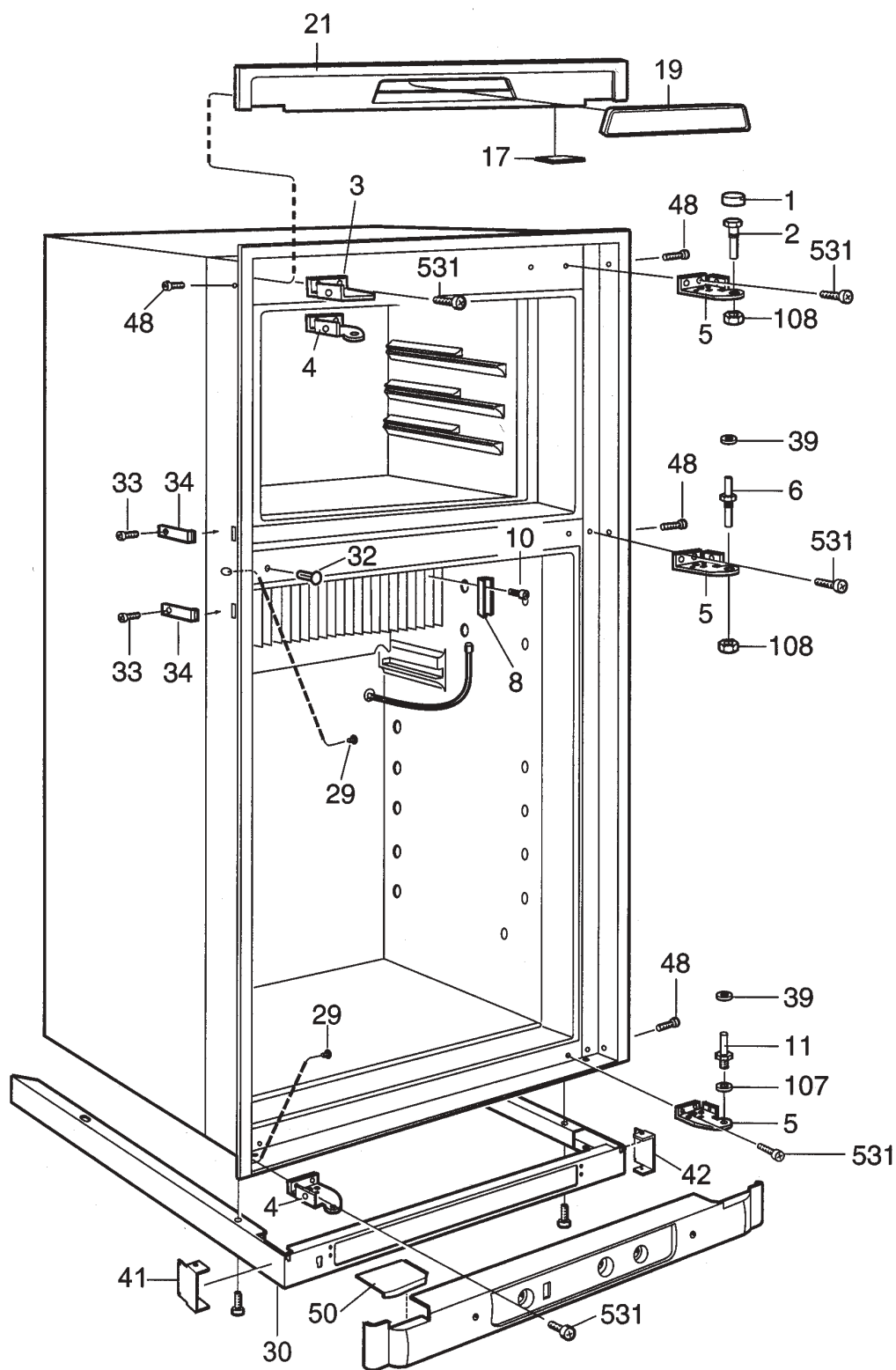
DOOR ASSEMBLY

RM4601 921144069 = A

INDEX	PART NUMBER	MODEL	DESCRIPTION
1	2932561109	A	Freezer door, RH-Brown
2	2932563048	A	Refrigerator door RH-Brown
3	2932740018	A	Covering washer
4	2931171041	A	Hinge bushing
5	2932578020	A	Holder
6	2932588011	A	Stopper
7	3858002102	A	Screw, RXS B4x9.5
8	2932093012	A	Handle
9	3858000031	A	Screw, Brown ELM PT 50x26
10	2932577014	A	Door shelf
11	2932576016	A	Door shelf
12	2932575018	A	Door shelf
13	3850381017	A	Decoration-Brown
15	2932585033	A	Rack
16	2932658012	A	Bottle holder
17	2932579010	A	Ice container
19	2932468115	A	Door Panel Freezer
20	2932468099	A	Door Panel Refrigerator
26	2932469071	A	Cushion, door panel
27	2932469055	A	Cushion Door panel
32	3850625033	A	Plug

Only Those Parts Identified With An Index Number Are Available For Service Replacement.

CABINET, EXTERIOR COMPONENTS



NCMOB2052885

Only Those Parts Identified With An Index Number Are Available For Service Replacement.

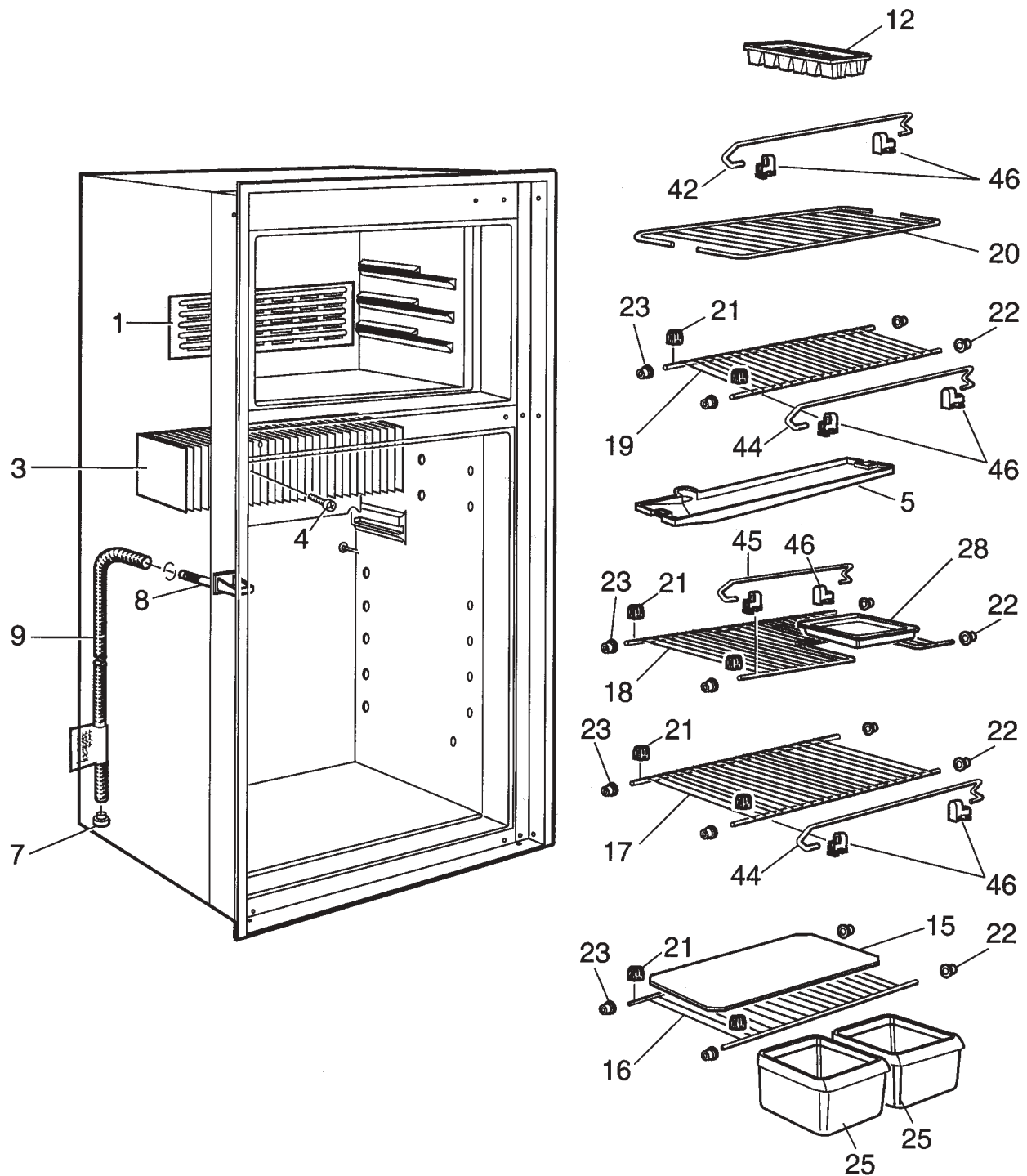
CABINET, EXTERIOR COMPONENTS

RM4601 921144069 = A

INDEX	PART NUMBER	MODEL	DESCRIPTION
1	2932736016	A	Cover
2	2932647015	A	Hinge pin, upper
3	2932644012	A	Bracket LH
	2932644020	A	Bracket RH
4	2932643022	A	Hinge
5	2932643014	A	Hinge
6	2932648013	A	Hinge pin, middle
8	2890050004	A	Clamp
10	3858002276	A	Screw, RXS B8, 4.2x16
11	2932649011	A	Hinge pin, lower
17	2932330018	A	Cover,washer
19	2933043032	A	Cover plate, name
21	2932641018	A	Front, Brown
29	2930740044	A	Cover, Brown
30	2932836022	A	Base
32	3850585047	A	Plug
33	3858002052	A	Screw, RXS B6x6.5
34	2932855014	A	Fastening bow
39	3858010089	A	Washer, 5.5x12x1
41	2932481019	A	Bracket
42	2932481027	A	Bracket
48	3858004058	A	Screw, zinc-plated, MRX M4x4
50	2932479013	A	Cover, Tray-LH
	2932479021	A	Cover Tray-RH
107	3858010113	A	Washer, zinc-plated, BRB 6.4x12.5
108	3858009040	A	Nut, ML6 M6 Brown
300	2932750066	A	Door Reversing Kit
531	3858039047	A	Screw, zinc-plated MRX M4x10

Only Those Parts Identified With An Index Number Are Available For Service Replacement.

CABINET, INTERIOR COMPONENTS



NCMOD2052924

Only Those Parts Identified With An Index Number Are Available For Service Replacement.

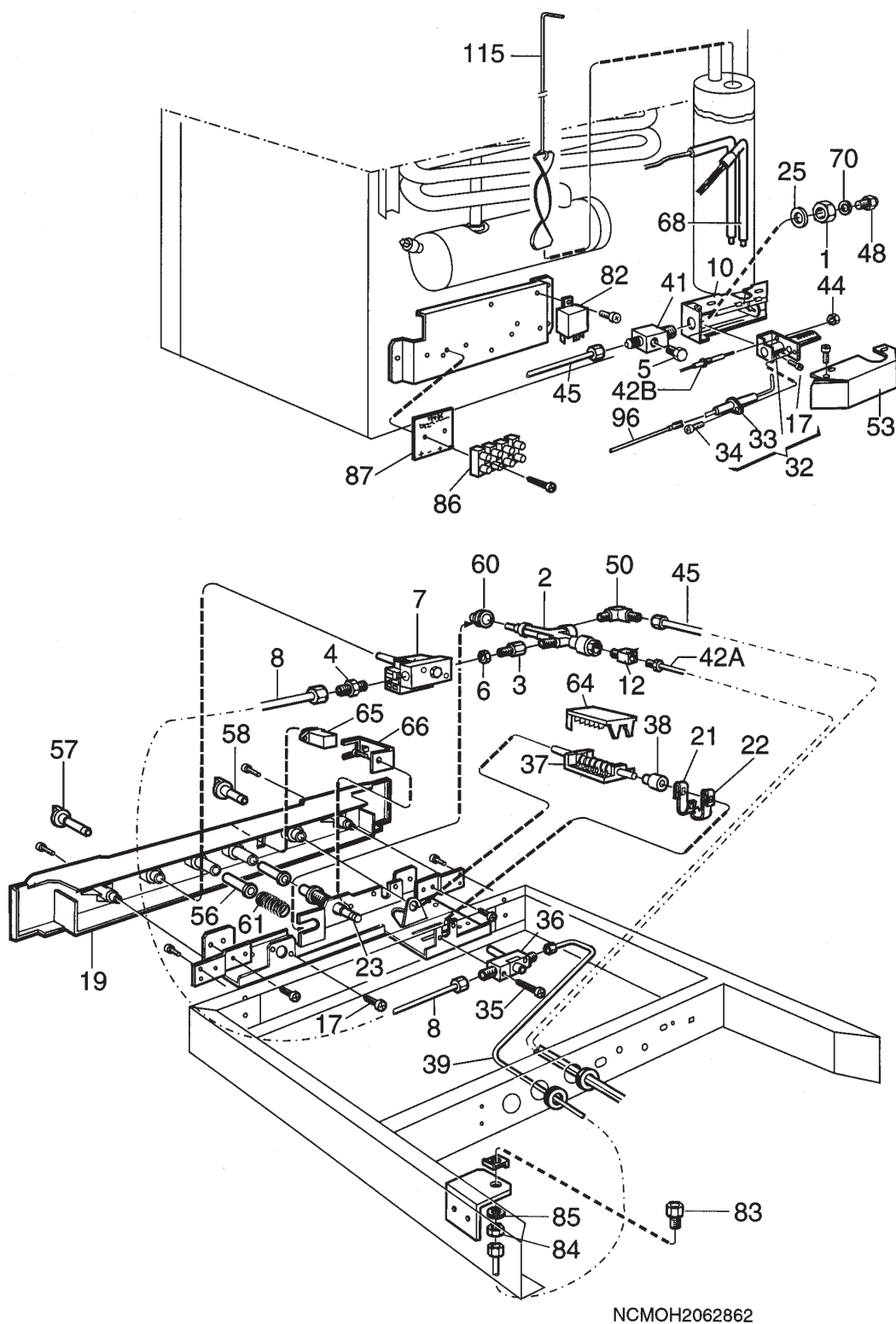
CABINET, INTERIOR COMPONENTS

RM4601 921144069 = A

INDEX	PART NUMBER	MODEL	DESCRIPTION
1	2932728013	A	Coverplate
3	2932630029	A	Cooling flange
4	3858036019	A	Screw, KFXS B10x38
5	2932624014	A	Drip protection
7	2932115013	A	Discharge, pipe, plug
8	2932635010	A	Drain
9	2932749043	A	Drain hose-500mm
12	2930400003	A	Ice Tray
15	2931117176	A	Shelf
16	3850324025	A	Grating Plastic
17	3850324017	A	Grating Shelf
18	3850325014	A	Grating Shelf
19	3850324033	A	Grating Shelf
20	2932627025	A	Grating Shelf
21	2932102011	A	Shelf support
22	2932101013	A	Plug
23	2932103019	A	Plug
25	2932621010	A	Supplies
28	2932636018	A	Box
42	2007337146	A	Rack
44	2007337211	A	Rack
45	2007337120	A	Rack
46	2930693045	A	Holder

Only Those Parts Identified With An Index Number Are Available For Service Replacement.

CONTROL & BURNER COMPONENTS



Only Those Parts Identified With An Index Number Are Available For Service Replacement.

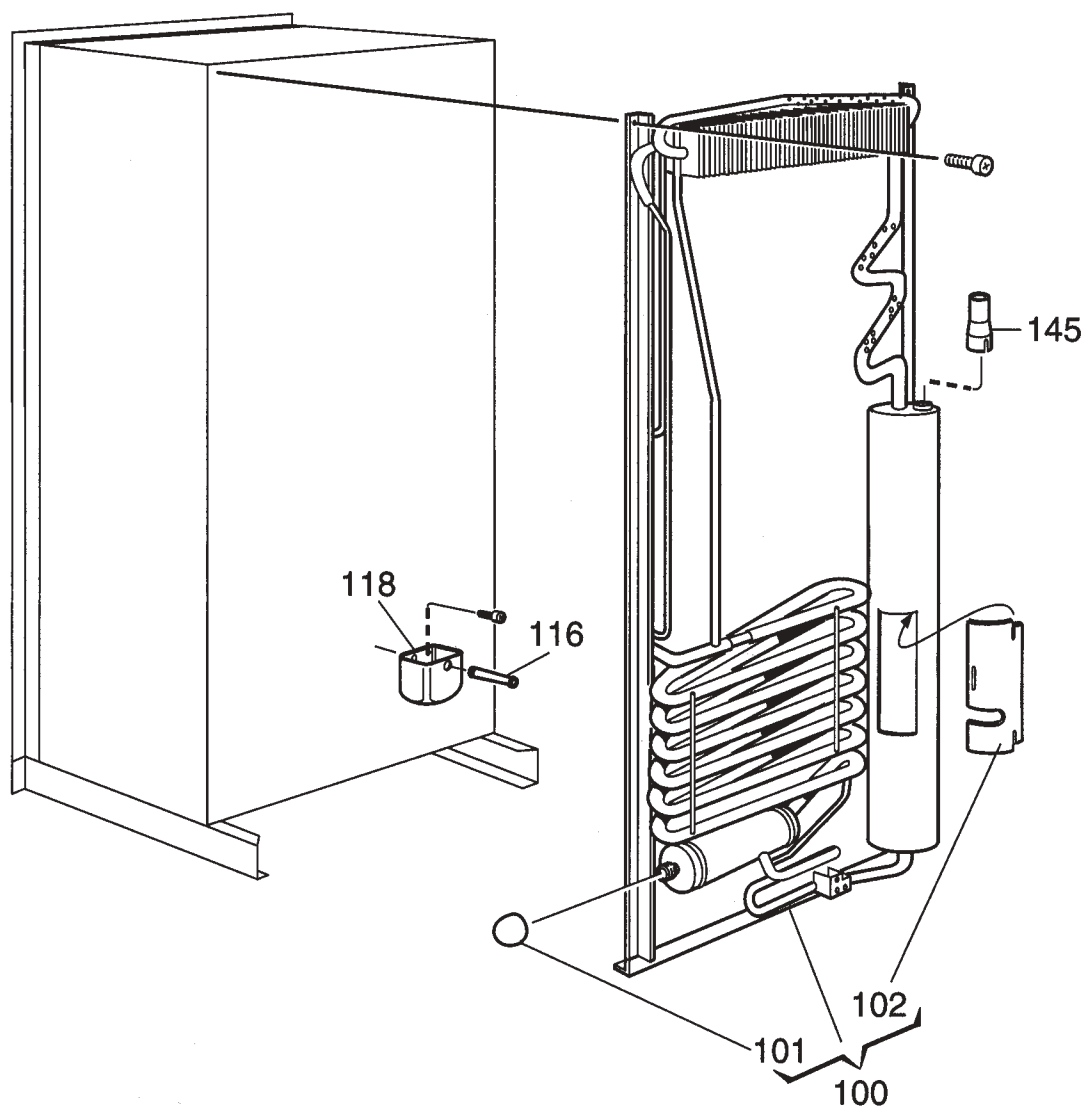
CONTROL & BURNER COMPONENTS

RM4601 921144069 = A

INDEX	PART NUMBER	MODEL	DESCRIPTION
1	0140207044	A	Nut
2	2931656017	A	Safety Valve
3	2932591015	A	Nipple
4	2931338012	A	Nipple
5	2932097013	A	Nipple
6	2954070005	A	Nut
7	2931336032	A	Thermostat
8	2932619014	A	Gas Pipe
10	2932603018	A	Burner Housing
12	2955033002	A	Adaptor, Thermo element
17	3858039039	A	Screw, MRX M4x8
19	2932476027	A	Front Base
21	2007577014	A	Spring
22	2007578004	A	Spring
23	2931796011	A	Piezo lighter
25	3858010071	A	Washer, 12.5x18.5x1
32	2930697061	A	Burner
33	2930379009	A	Electrode
34	3858005014	A	Screw, RXK B6x9.5
35	3858039070	A	Screw, M4x25
36	2932617018	A	Gas cock
37	2932614015	A	Switch
38	2932602010	A	Bush
39	2933050011	A	Gas Pipe
41	2931227017	A	Nipple
42A	2932726041	A	Thermo element elongation 500mm
42B	2932726025	A	Thermo element 500mm
44	2801043015	A	Nut
45	2933049013	A	Gas Pipe
48	2007419217	A	Jet, #58
50	2930488008	A	Coupling
53	2932661016	A	Cover
56	2932596014	A	Push Button
57	2932605021	A	Knob, Complete
58	2932607027	A	Knob Complete
60	2932595016	A	Guidance
61	2932594019	A	Spring
64	2954023004	A	Cap
65	2955037011	A	Flame Indicator
66	2933071017	A	Mounting Plate
68	0173742339	A	Heater, 240VAC, 325W
	0173775024	A	Heater, 12VDC, 215W
70	2007457001	A	Washer, 0.5mm
82	2930385006	A	Relay
83	2954068009	A	Nipple
84	2954069007	A	Nut
85	3858055019	A	Washer
86	3858022035	A	Terminal Block
87	2933067015	A	Insulating Plate
96	2931360065	A	Ignitor Cable
115	2007590058	A	Baffle

Only Those Parts Identified With An Index Number Are Available For Service Replacement.

CABINET, REAR VIEW



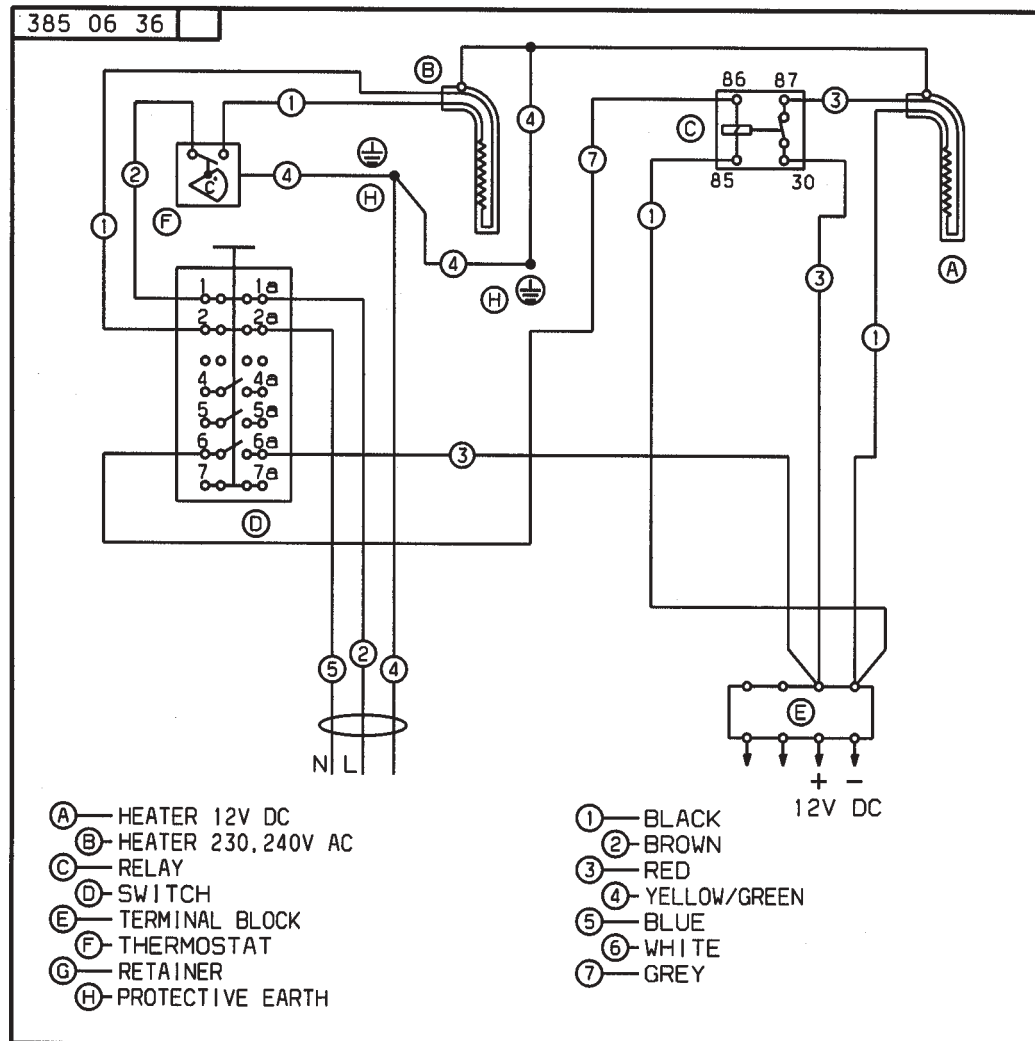
NCMOE2052887

Only Those Parts Identified With An Index Number Are Available For Service Replacement.

CABINET, REAR VIEW**RM4601 921144069 = A**

INDEX	PART NUMBER	MODEL	DESCRIPTION
100	2934605094	A	Cooling Unit type 605
101	0173228008	A	Cap
102	2933557007	A	Cover Sheet
116	2931829010	A	Outlet Tube
118	2931828012	A	Drip tray
145	2932195015	A	Adaptor

WIRING DIAGRAM



N38506360