

911-28C Replacement Tank

MANUFACTURER'S ONE-YEAR LIMITED WARRANTY

Dometic warrants, to the original purchaser only, that this product, if used for personal, family or household purposes, is free from defects in material and workmanship for a period of one year from the date of purchase.

If this Dometic product is placed in commercial or business use, it will be warranted, to the original purchaser only, to be free of defects in material and workmanship for a period of ninety (90) days from the date of purchase.

Dometic reserves the right to replace or repair any part of this product that proves, upon inspection by Dometic, to be defective in material or workmanship. All labor and transportation costs or charges incidental to warranty service are to be borne by the purchaser-user.

EXCLUSIONS

IN NO EVENT SHALL DOMETIC BE LIABLE FOR INCIDENTAL OR CONSEQUENTIAL DAMAGES, FOR DAMAGES RESULTING FROM IMPROPER INSTALLATION, OR FOR DAMAGES CAUSED BY NEGLIGENCE, ABUSE, ALTERATION OR USE OF UNAUTHORIZED COMPONENTS. ALL IMPLIED WARRANTIES, INCLUDING ANY IMPLIED WARRANTY OF MERCHANTABILITY OR FITNESS FOR ANY PARTICULAR PURPOSE, ARE LIMITED TO A PERIOD OF ONE YEAR FROM DATE OF PURCHASE.

IMPLIED WARRANTIES

No person is authorized to change, add to, or create any warranty or obligation other than that set forth herein.

Implied warranties, including those of merchantability and fitness for a particular purpose, are limited to one (1) year from the date of purchase for products used for personal, family or household purposes, and ninety (90) days from the date of purchase for products placed in commercial or business use.

OTHER RIGHTS

Some states do not allow limitations on the duration of an implied warranty and some states do not allow exclusions or limitations regarding incidental or consequential damages; so, the above limitations may not apply to you. This warranty gives you specific legal rights, and you may have other rights which may vary from state to state.

To obtain warranty service, first contact your local dealer from whom you purchased this product.



Caution!

This manual must be read and understood before installation, adjustment, service or maintenance is performed. Modification of this product can result in property damage.

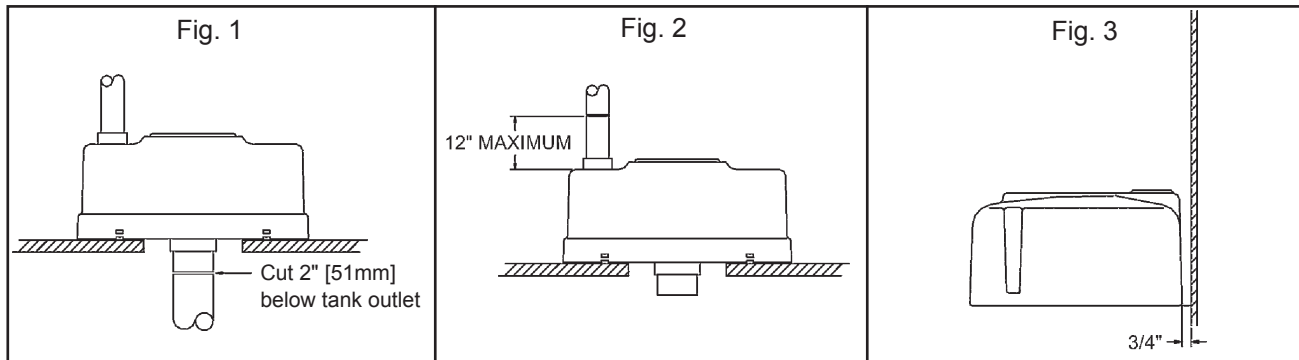
INSTALLATION INSTRUCTIONS

To remove toilet:

1. Empty existing tank and flush with clean, soapy water.
2. Turn off water supply to toilet.
3. Disconnect water line from water valve at lower left side of toilet base.
4. Remove the (4) nuts and flat washers around the toilet base and discard.
5. Carefully lift toilet from tank and set aside.

To remove old tank:

1. Disconnect 3" [76mm] discharge line from underside of tank. If there is no disconnect possible, then cut pipe as shown in Figure 1.
2. Disconnect the 1-1/2" [38mm] pipe. If there is not a disconnect in the vent line, cut the vent pipe at any point less than 12" [305mm] above the tank. (See Fig. 2)
3. Remove the hold down clips around the bottom skirt of the tank.
4. Remove tank and discard.



To install the new tank:

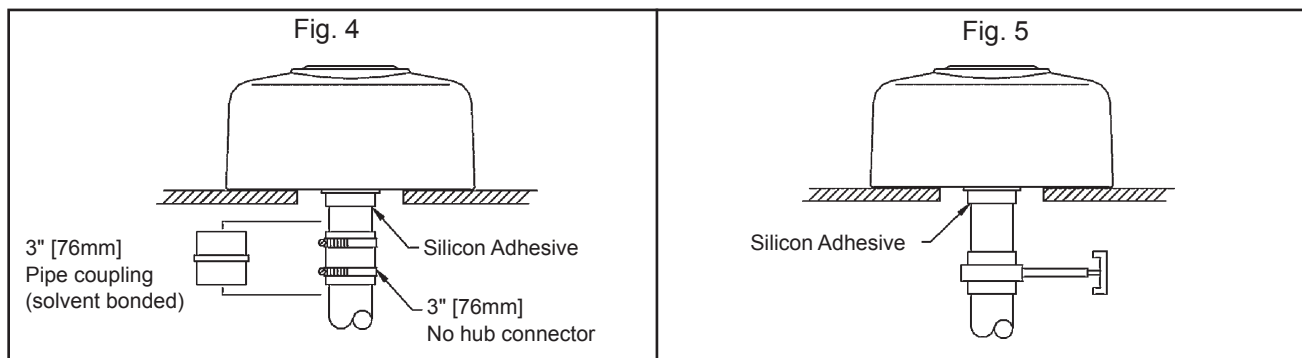
It may be necessary to install part of the discharge pipe to the outlet on the bottom of the new tank before mounting the tank to the floor. Use silicone adhesive instead of pipe sealant or Teflon tape to seal the threads. Apply silicon adhesive to both the pipe threads and the tank threads. Allow the adhesive "to skin" over (about 10 minutes). Then screw the pipe into the tank outlet. (See Fig. 4.)

NOTE: The replacement tank must be mounted approximately 3/4" from the wall. (See Fig. 3)

1. To insure proper alignment, connect the tank outlet to the discharge pipe before securing the tank to the floor. Apply silicon adhesive instead of pipe sealant or Teflon tape to the threads of the tank outlet and adjoining threaded pipe. Allow the adhesive "to skin" over (approximately 10 minutes). Then screw the pipe into the tank outlet. See figure 4.
2. Confirm that the tank is laying flat on the floor, not held off the floor by the discharge pipe. Secure the tank to the floor with the (4) #14 x 2" pan head screws.

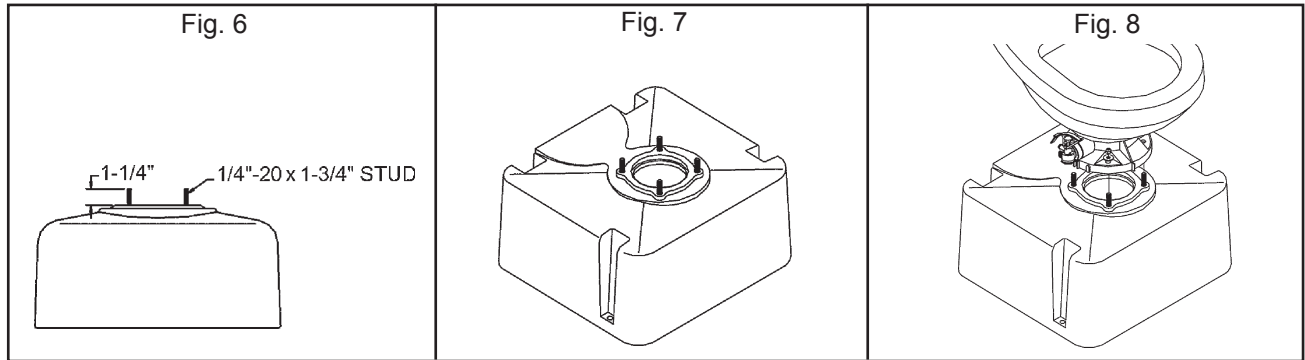
To install the vent pipe:

1. Screw the 1-1/2" hub x 1-1/2" MPT into the threaded vent hole on top of the tank. Use pipe thread sealant or Teflon tape.
2. Cut, fit and align the remaining components as shown in "Vent Installation Diagram" section to make the connection to your existing vent pipe and solvent bond all the fittings and pipe using PVC solvent cement.
3. Slide the coupling down and over the gap between the vent pipe sections and tighten both clamps.

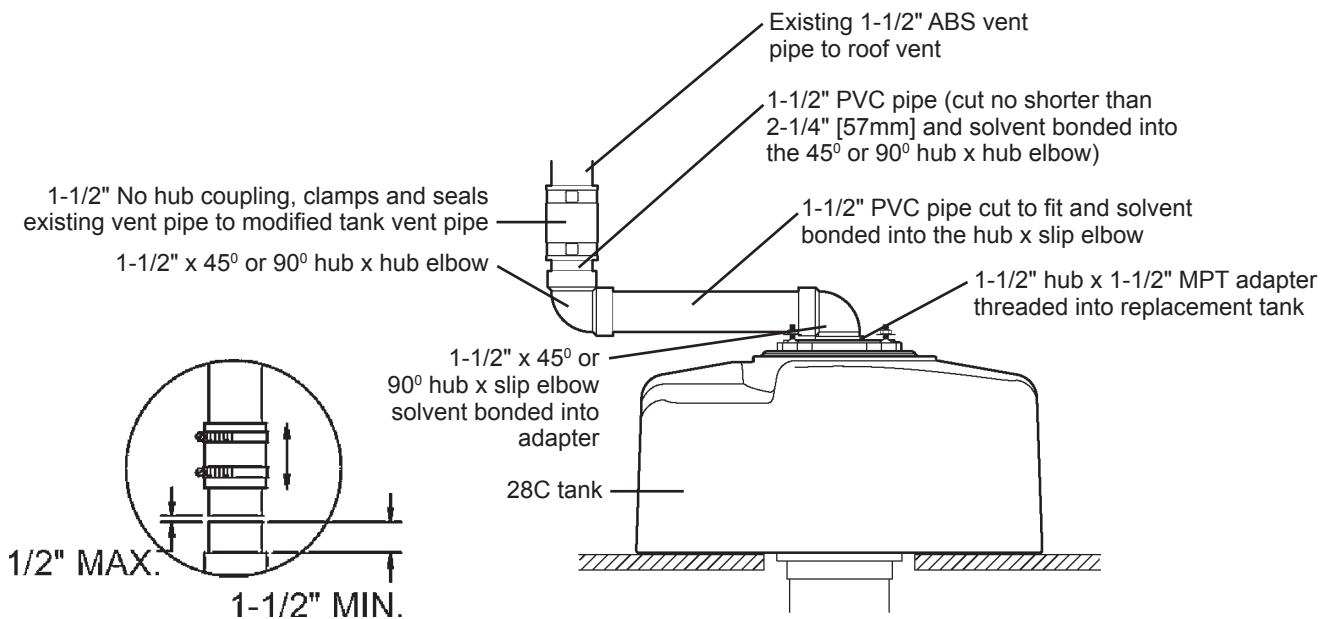


To remount toilet to new tank:

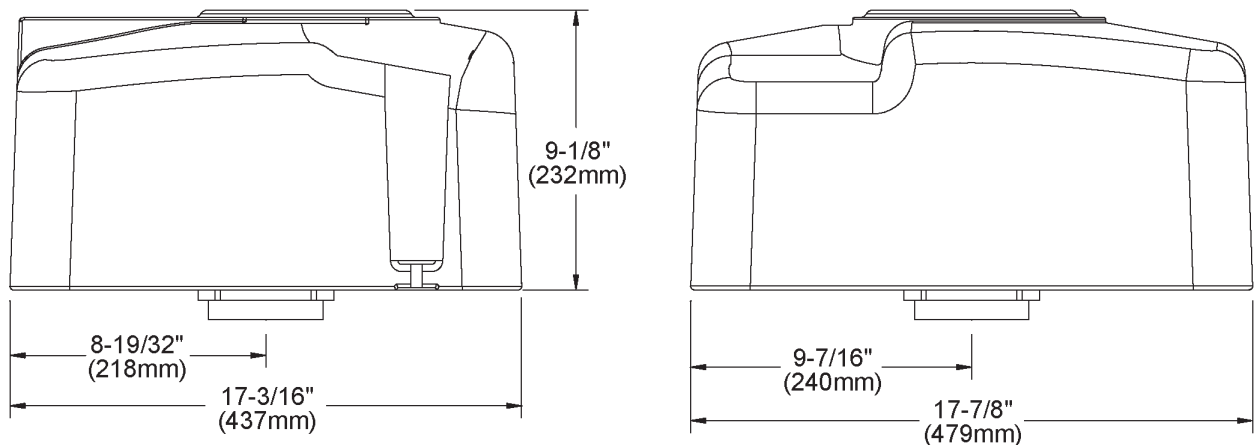
1. Install the (4) 1/4"-20 x 1-3/4" studs in inserts on the tank top. (See Fig. 6)
2. Place floor flange seal on studs aligning the studs with bumps on seal. Note: "THIS SIDE UP" should face upwards. (See Fig. 7)
3. Place toilet on studs and secure with (4) washers and (4) nuts. (See Fig. 8)
4. Reattach water line to toilet.



VENT INSTALLATION DIAGRAM

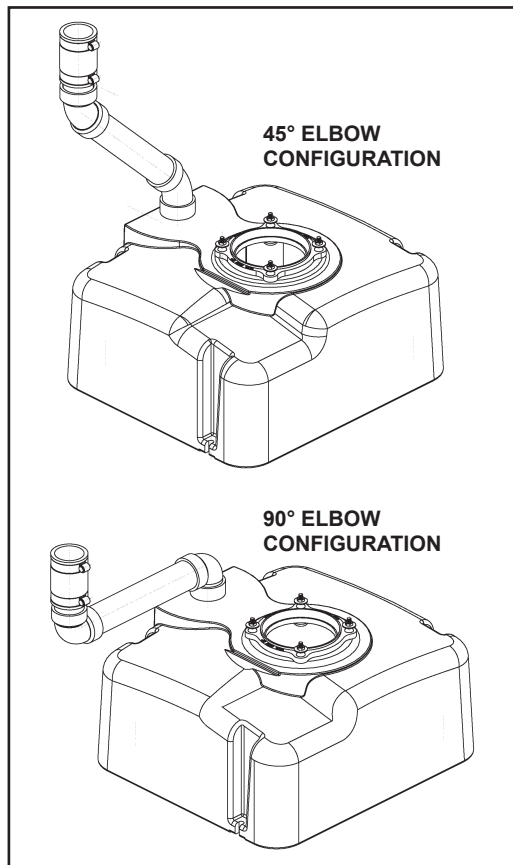
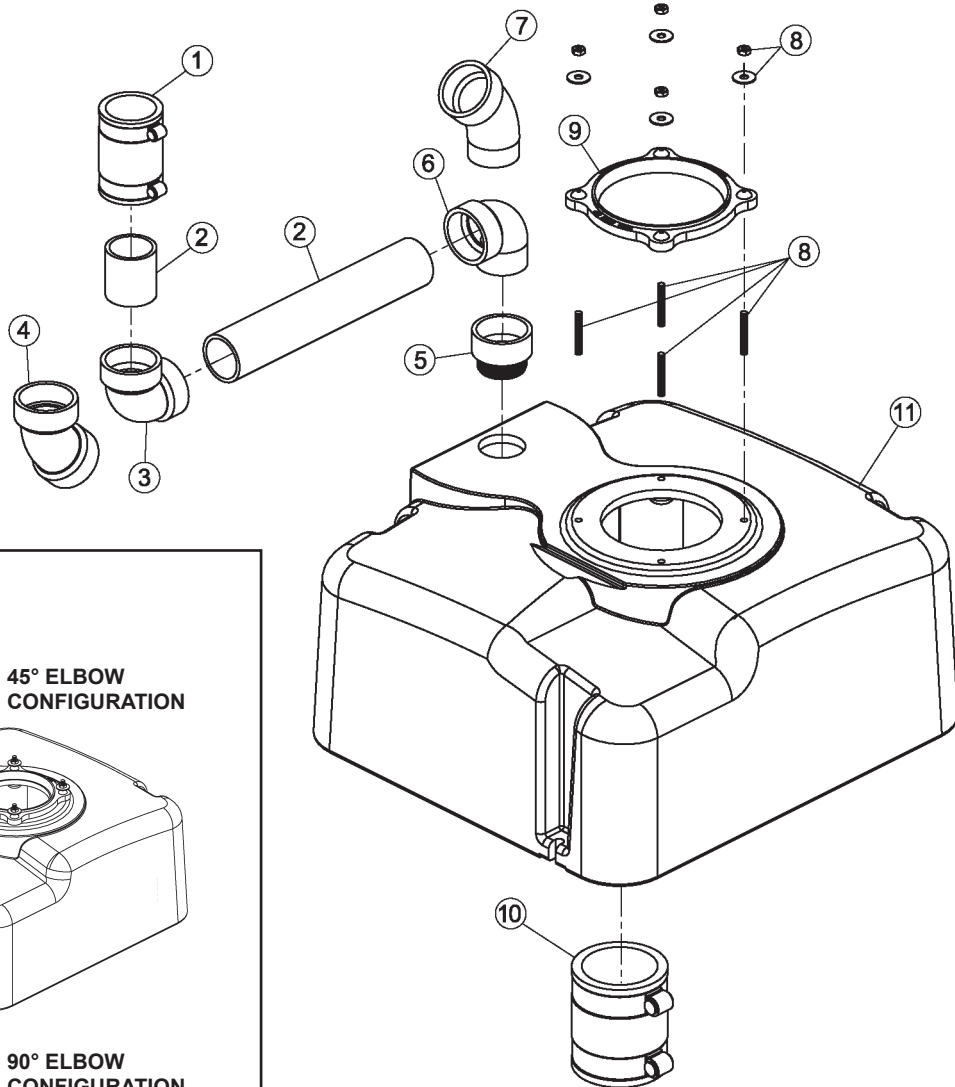


DIMENSIONAL SPECIFICATIONS



PARTS LIST

Item	Part No.	Description	Item	Part No.	Description
1	*	Connector, 1-1/2" no hub	7	*	Elbow, 1-1/2", 45° street
2	*	Pipe, 1-1/2", sch. 40 PVC	8	385310534	Mounting hardware
3	*	Elbow, 1-1/2", 90° hub x hub	9	385310063	Seal kit
4	*	Elbow, 1-1/2", 45° hub x hub	10	*	Connector, 3" no hub
5	*	Adapter, 1-1/2", hub x MPT	11	385310084	28C holding tank (incl. items 1-10)
6	*	Elbow, 1-1/2", 90° street	<i>* common parts available at plumbing retailers</i>		



DOMETIC CORPORATION
 SANITATION DIVISION
 13128 SR 226 | PO BOX 38
 BIG PRAIRIE, OHIO 44611 USA
www.Dometic.com