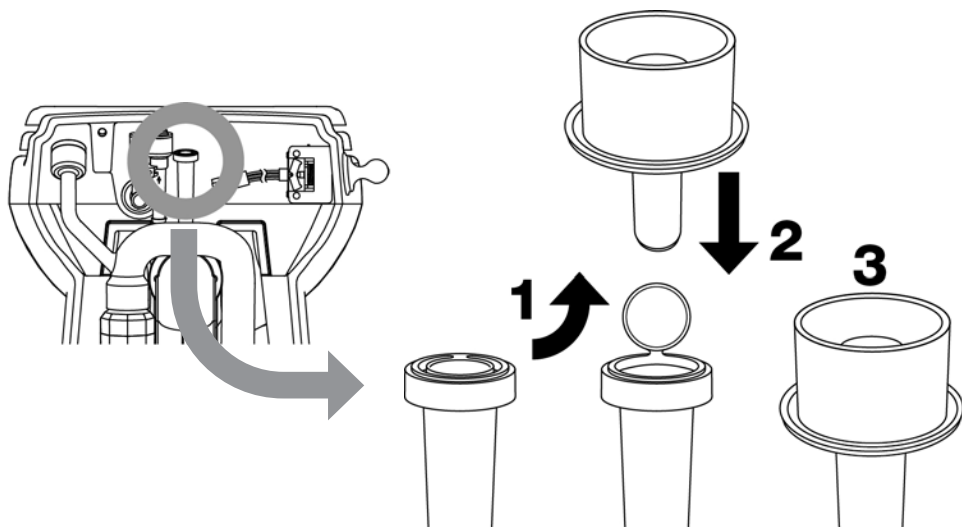


# 385312013 REPLACEMENT AIR VALVE FOR MASTERFLUSH 8700 AND 8600 SERIES TOILETS

This replacement air valve creates optimal air flow in discharge plumbing for consistently powerful flushes.

## INSTALLATION

1. Locate proper air valve at rear of toilet (inside gray circle)
2. Lift or remove small rubber flapper inside top of valve ( **1** ).
3. Push replacement air valve securely into tube ( **2** ). No sealants or fasteners are required.
4. Toilet is ready for operation ( **3** ).



 **Dometic®**