



REFRIGERATION AMERICANA

EN DM2652, DM2852 Circuit Board Replacement Service Kit Instructions

USA & CANADA
Service Office
Dometic Corporation
5155 Verdant Drive
Elkhart, IN 46516

Service Center & Dealer Locations
Visit: www.dometic.com

Kit Contents	Description
385076902	DISPLAY PCB ASM, 2W STD-VER 2
3318129.000	Service Kit Instructions


Recommended Tools

Phillips-head Screwdriver/Bit

1 Explanation of Symbols and Safety Instructions


This manual has safety information and instructions to help you eliminate or reduce the risk of accidents and injuries.

1.1 Recognize Safety Information

 **This is the safety alert symbol.** It is used to alert you to potential physical injury hazards. Obey all safety messages that follow this symbol to avoid possible injury or death.

1.2 Understand Signal Words

A signal word will identify safety messages and property damage messages, and it will indicate the degree or level of hazard seriousness.

 **WARNING**
Indicates a hazardous situation that, if **not** avoided, could result in death or serious injury.

2 Installation

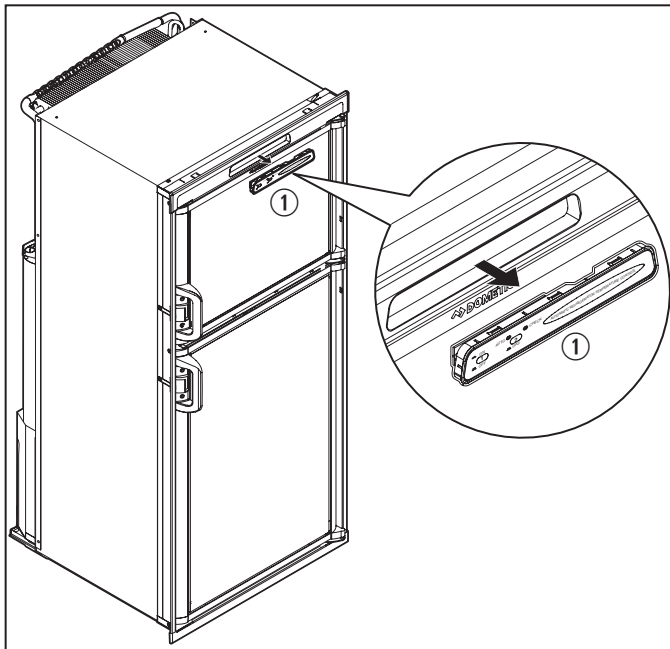
⚠ WARNING: ELECTRICAL SHOCK HAZARD.

Disconnect all power before working within any electrical enclosure or before handling any electrical connections. Failure to obey this warning could result in death or serious injury.

2.1 Removing the Existing Circuit Board

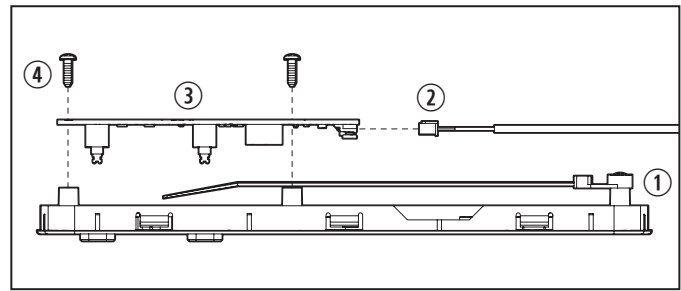
This section describes the proper technique to remove the existing circuit board.

1. Disconnect the refrigerator from all power sources (120 VAC and 12 VDC).



1 Removing the Control Interface Display

- ① Control Interface Display
2. Using your fingertips, pull the control interface display free of the refrigerator.



2 Removing the Circuit Board

- ① Control Interface Display
 - ② 5-pin Connector
 - ③ Circuit Board
 - ④ Screw
3. Unplug the 5-pin connector located at the end of the circuit board by gently pulling on the connector. Do not pull on the wires.
 4. Remove the two screws attaching the circuit board to the control interface display. Retain the screws.
 5. Use your fingertips to pull out the existing circuit board.

2.2 Installing the Replacement Circuit Board

This section describes the proper technique to install the replacement circuit board.

1. Position the replacement circuit board with the lights facing the control interface display and the screw holes aligned.
2. Secure the circuit board using the retained screws. Do not over-tighten.
3. Gently plug in the 5-pin connector.
4. Push the control interface display into its original position on the refrigerator.
5. Connect the refrigerator to its power sources.
6. Turn the refrigerator on and verify that the controls are working properly. Refer to the operation manual (331240.016) for information on starting and operating the refrigerator.