



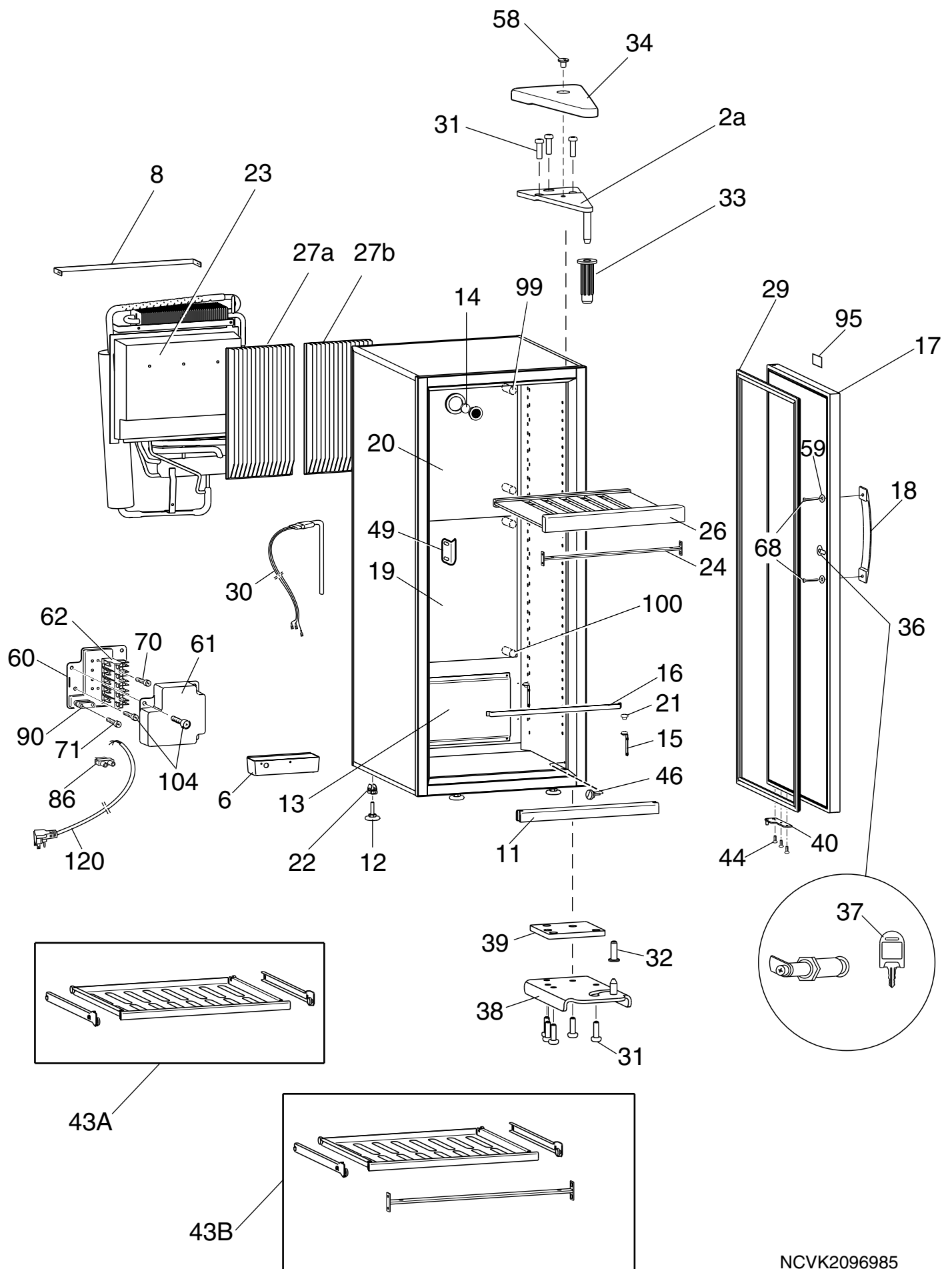
Dometic
Spare parts list

When ordering parts, always state:
MODEL NO. - PRODUCT NO - QUANTITY -
PART NO. - DESCRIPTION
For electrical parts, also state:
VOLTAGE - WATTAGE

WINE CELLAR

PNC:	Model:	Voltage:	Cabinet Color:	Door Finish:	Door Hinge:	Brand:	Market:
921178264	CS160D	120 VAC	Autumn Cherry	Wood/Black Frame	Right	Dometic	USA/Canada

		WINE CELLAR	
SERVICE OFFICE: USA Dometic, LLC 2320 Industrial Parkway Elkhart, IN 46516 574-294-2511 CANADA Dometic, LLC 46 Zatonski, Unit 3 Brantford, ON N3T 5L8 CANADA 519-720-9578		For Technical Assistance Call: 800-544-4881 Document No.: 3312672.000 Date: 2008/06 Motala Reference: 599531189 - 2007/10/18 © Dometic, LLC	CS160D



NCVK2096985

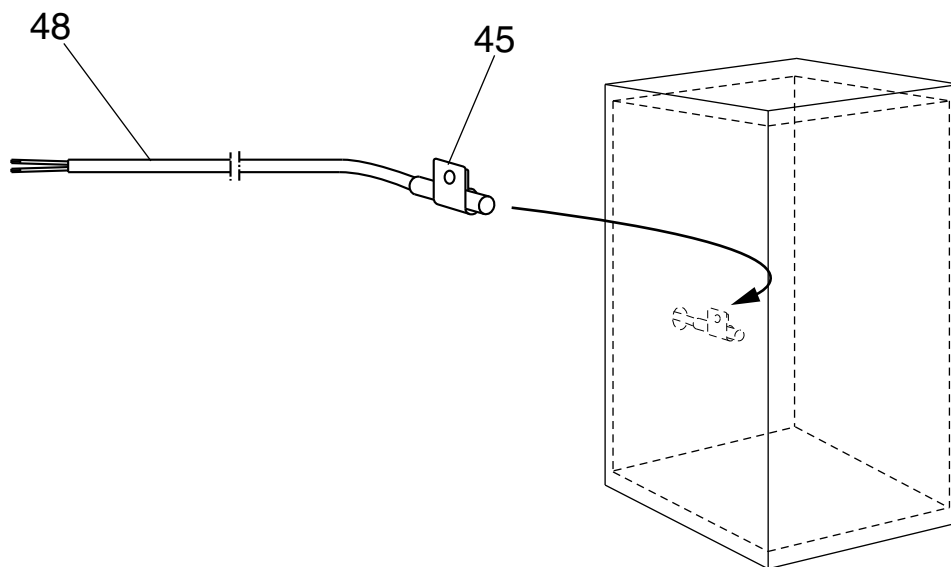
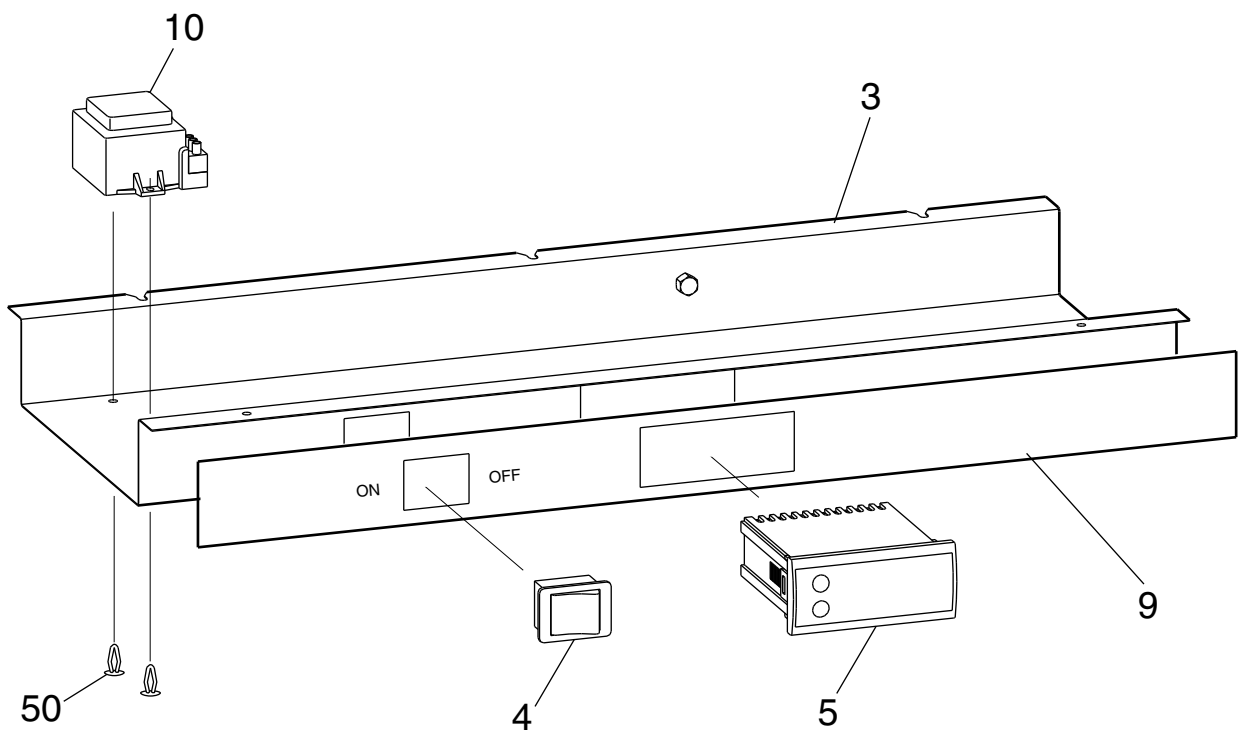
Matrix	PNC	ELC	ProdDate	Model
A	921178264	00	20070910	CS160D

Pos	Part No.	Matrix	Description
2a	2955226028	A	Door hinge,upper
6	2955364019	A	Drop tray
8	2955273012	A	Detent,outer,rear,cpl.
11	2955276049	A	Wood,support,floor
12	2955225012	A	Foot
13	2955232067	A	Panel,cpl.,heating,127V, 40W
14	2955231010	A	Charcoal filter
15	2955385022	A	Shelf support,complete
16	2955309022	A	Detent,inner,rear
17	2955519026	A	Door assembly complete,wood,right
18	2955482019	A	Handle
19	2955384298	A	Disc,plastic,black
20	2955384280	A	Disc,plastic,black
21	2955373010	A	Cap,shelf support
22	3858058013	A	Nut,M10
23	2934706108	A	Cooling unit,with,thermal fuse,706
24	2955387010	A	Reinforcement bar,cpl.
26	2955480039	A	Shelf,wood
27a	2955358011	A	Evaporator,left
27b	2955358029	A	Evaporator,right
29	2955250028	A	Door gasket
30	3850644281	A	Heater,120V, 220W
31	3858052016	A	Screw,black,MRT M5X20
32	2955255019	A	Bush,door,lower
33	2955254012	A	Bush,door
34	2955400011	A	Cover
36	2955483017	A	Door lock
37	2955587015	A	Key,door,wood
38	2955311010	A	Hinge,detent,lower right
39	2955326018	A	Distance plate
40	2955313016	A	Door stop
43A	2955575010	A	Shelf,sliding type,cpl. From serial no. 73600026
43B	2955577016	A	Service kit,shelf,reinforcement bar Up to serial no. 73600025
44	3858056025	A	Screw,zinc-plated,MFX M5X10
46	2955324013	A	Plastic screw
49	2955263013	A	Lock,catch
58	3858023017	A	Screw,LKCS M5X6
59	3858010170	A	Washer,black,5,3X15X2
60	2955396011	A	Terminal box,bottom
61	2955397019	A	Terminal box,Cover
62	2955398017	A	Terminal block

Exploded view no.: NCVK2096985
N00002096985

Matrix	PNC	ELC	ProdDate	Model
A	921178264	00	20070910	CS160D

Pos	Part No.	Matrix	Description
68	3858069028	A	Screw,black,MCS M4X50
70	3858006038	A	Screw,PT 35X30
71	3858006020	A	Screw,PT 35X20
86	3858062015	A	Terminal block
90	2932342013	A	Cable clamp
95	2955351024	A	Name plate
99	2955259029	A	Spacer sleeve,upper
100	2955259011	A	Spacer sleeve,lower
104	3858068012	A	Screw,DK 4.8X16
120	2002699151	A	Cord set

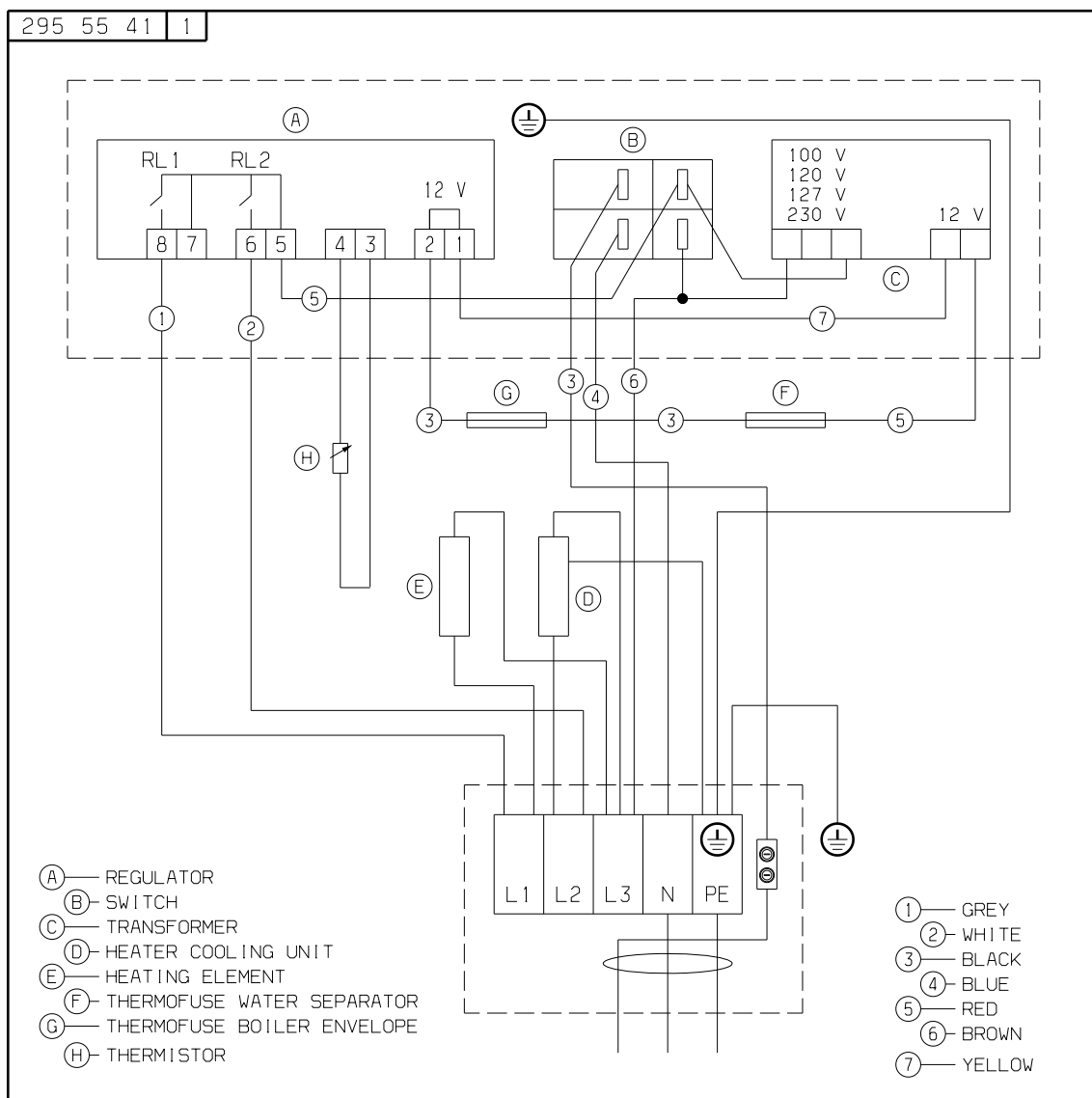


NCVK2096639

Exploded view no.: NCVK2096639
N00002096988

Matrix	PNC	ELC	ProdDate	Model
A	921178264	00	20070910	CS160D

Pos	Part No.	Matrix	Description
3	2955242017	A	Bracket
4	2955244013	A	Toggle switch
5	2955477019	A	Control unit
9	2955355058	A	Label,control unit
10	2955243049	A	Transformer,115V/12V
45	2955433012	A	Cable clamp
48	3851059059	A	Thermistor
50	2932373034	A	Bung,black



N29555411